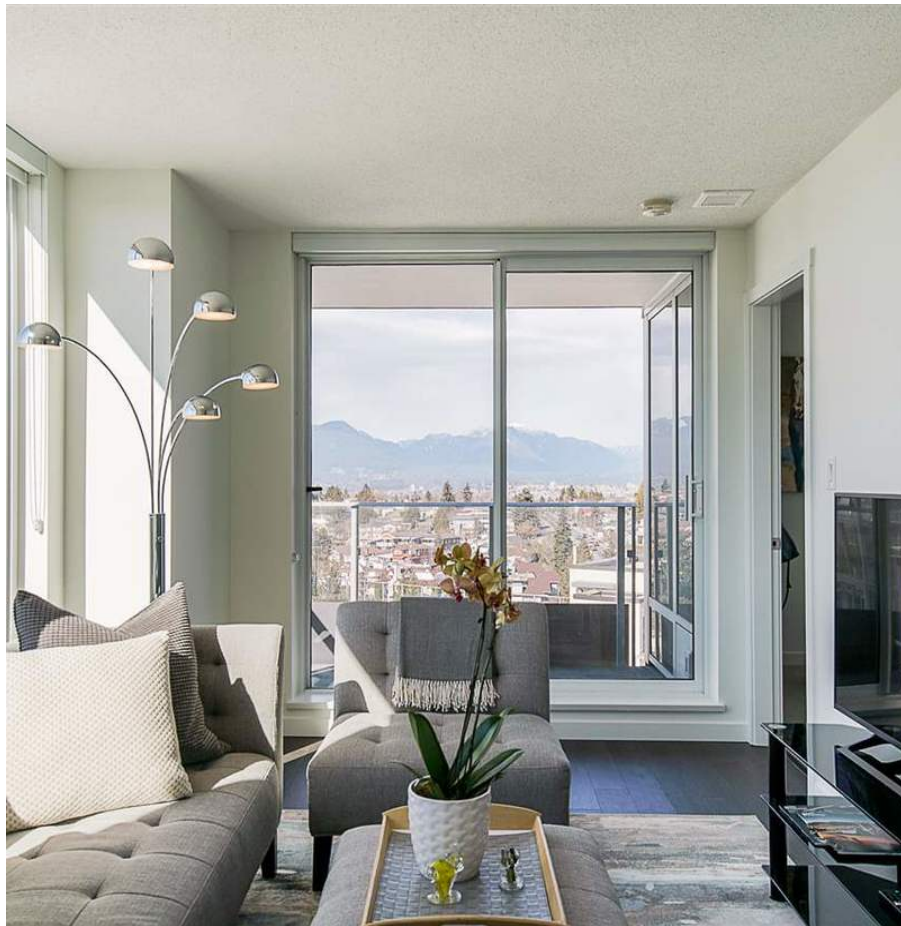


1202 5515 Boundary Road, Vancouver

\$558,000



A6 PLAN! Stunning 1 bed & flex, NW CORNER unit features beautiful quartz kitchen counters, Porter & Charles appliance package w/5 element gas range for aspiring chefs, large balcony for entertaining or to relax (not on busy Boundary side). Lovely bedroom w/mountain views & walk-in closet, marble bathroom counters & optimized vanity storage. First class amenities inc 60 ft lap pool, hot tub, 2 gyms & meeting room. This unit is located on same floor as roof top gardens - it's like having your own backyard! Walk easily to Joyce Skytrain, Central Park, Starbucks, hot yoga, neighbourhood merchants or quick access to major arterial routes and Metrotown. Built to LEED gold standards w/ 2-5-10 warranty.

KEY INFORMATION

MLS® R2347576

Residential Attached

Collingwood

1 Bedroom

1 Bathroom

575 SF

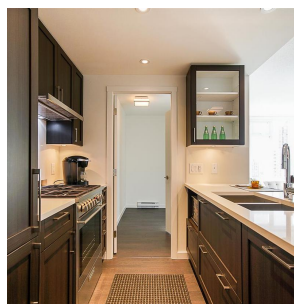
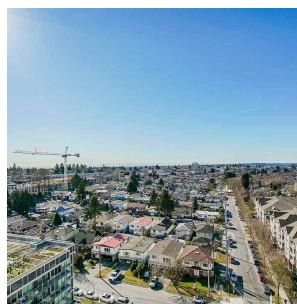
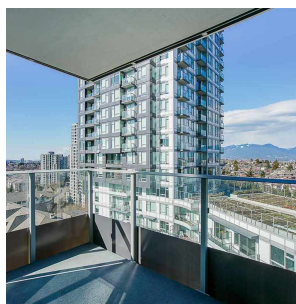
\$254.84 Maintenance Fees

FEATURES

Year Built: 2017

Views: NORTHSHORE MOUNTAINS & CITY

Listed By: rennie & associates realty ltd.



Erica Pang
604.723.3538
epang@rennie.com
rennie.com/ericapang

rennie