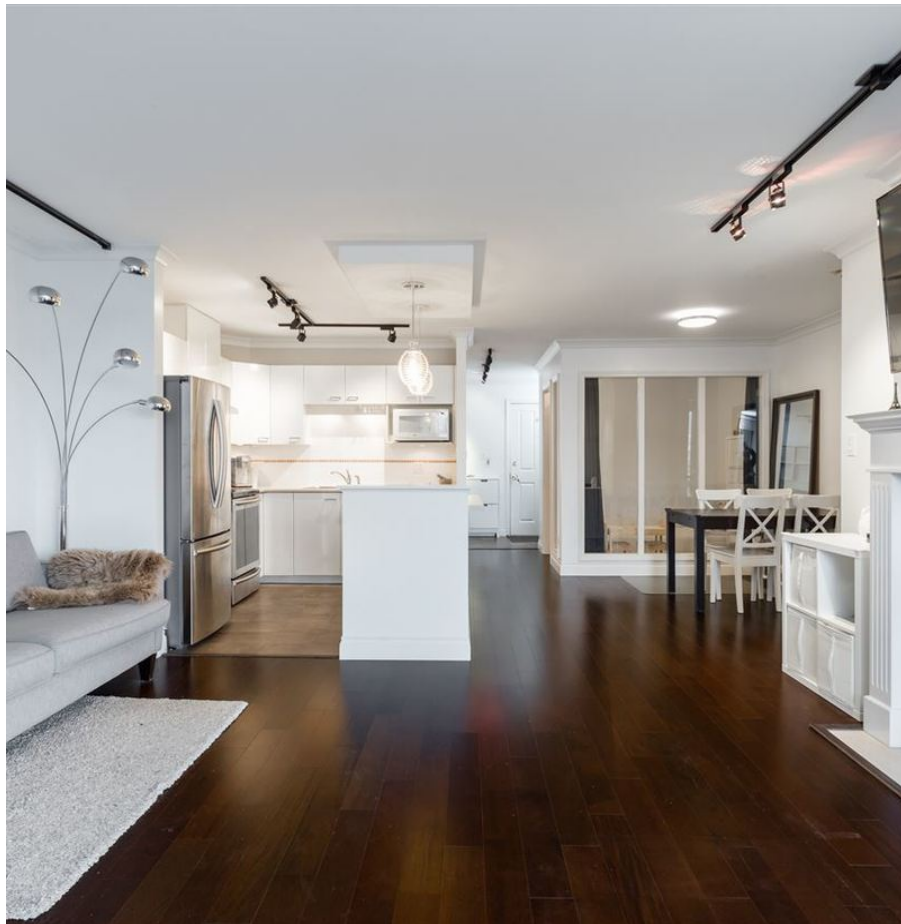


# 1008 4425 Halifax Street, Burnaby

\$649,000



Spacious Corner Unit 1 Bed/2 Bath with Large Den in the "POLARIS" building located in the heart of Brentwood Area with Stunning North Shore Mountains and Downtown Views. This beautiful unit offers a bright and excellent functional floor plan including upgraded Stainless appliances, Hardwood Flooring, Crown Mouldings, in-suite laundry, Large Wrap Around Balcony, 1 Parking and 1 Storage Locker. DEN does include windows and is currently converted into 2nd bedroom. Just steps away from skytrain, Brentwood Mall, Whole foods, Schools, Restaurants, Library, Parks and Community centre. Pets are welcome! OPEN HOUSE: APR 13/14 SAT/SUN FROM 2:30-4:30PM.

## KEY INFORMATION

MLS® R2357016

Residential Attached

Brentwood Park

1 Bedroom

2 Bathrooms

910 SF

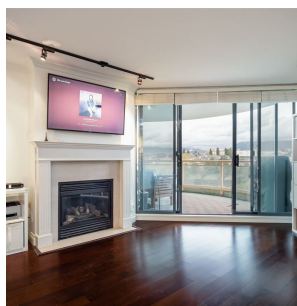
\$342.45 Maintenance Fees

## FEATURES

Year Built: 1998

Views: NORTH SHORE MOUNTAIN/DOWNTOWN

Listed By: rennie & associates realty ltd.



**Andy Mah** PREC\*  
604.779.9382  
amah@rennie.com  
rennie.com/andymah

**rennie**