

1106 4360 Beresford Street, Burnaby

\$1,148,000



Modello - A stunning Architectural gem by Boffo in an elegant & vibrant community steps away from Metrotown. This brand new Luxury 2 BR & Den home will satisfy the discerning Buyer offering rich hardwood flooring, built in desk, designer cabinetry/millwork, custom designed gourmet kitchen with marble slab feature wall, Miele appliances, oversize fridge & a pantry. Be pampered in the Spa-inspired heated marble floored baths with floating vanity, bidet & Hansgrohe fixtures. Large, expansive Balcony to relax & enjoy the tranquil view. The Private Residence Club provides 5* dining, bar, hotel type lounges, terraced garden entertaining, fitness and spa. 1 parking and 1 storage included.

KEY INFORMATION

MLS® R2361703

Residential Attached

Metrotown

2 Bedrooms

2 Bathrooms

1,192 SF

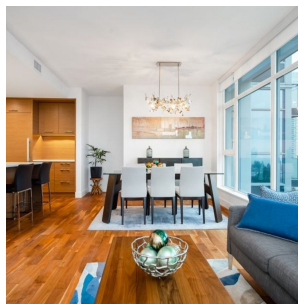
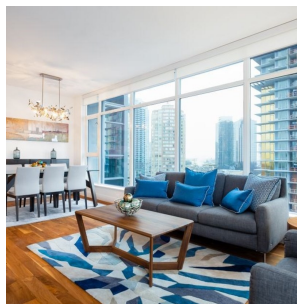
\$593.18 Maintenance Fees

FEATURES

Year Built: 2017

Views: CENTRAL PARK & CITY

Listed By: rennie & associates realty ltd.



Brandon Price PREC*
604.765.9555
bprice@rennie.com
rennie.com/brandanprice

rennie