

# 1802 68 Smithe Street, Vancouver

\$625,000



ONE PACIFIC by Concord Pacific. TRANQUIL one bedroom suite that shows like new! No space is wasted in this luxurious 18th floor condo! Enjoy amazing city views, a spacious balcony, oversized den, hardwood flooring, AIR CONDITIONING and integrated Miele appliances. You cannot beat this location! Just steps to the seawall and all that Yaletown has to offer, including Urban Fare, the Canada Line, Roundhouse Community Centre, Cooper's Park and so much more. Rentals and Pets allowed. 1 storage locker included. Enjoy 24-hr concierge with 5-star living amenities including a Sky Garden, the Riviera Deck with cantilevered heated swimming pool and roof top BBQ area. OPEN HOUSE SAT (MAY 11th) 2-4PM.

## KEY INFORMATION

MLS® R2365658

Residential Attached

Downtown

1 Bedroom

1 Bathroom

508 SF

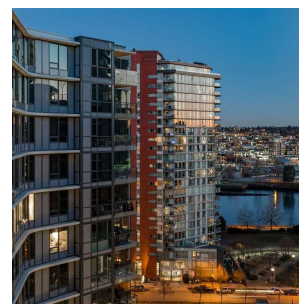
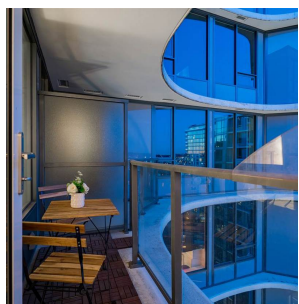
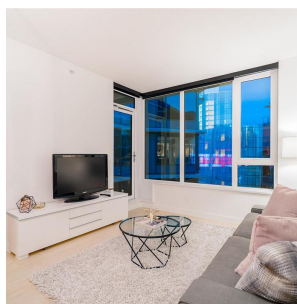
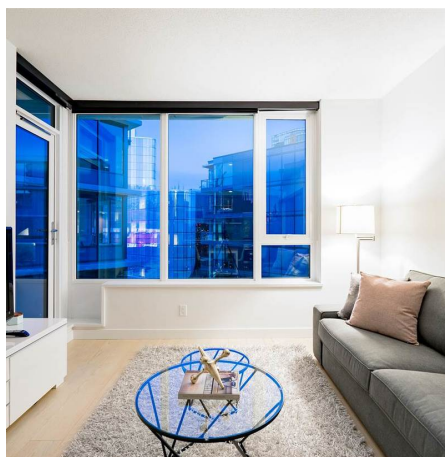
\$265.60 Maintenance Fees

## FEATURES

Year Built: 2016

Views: City & water views

Listed By: rennie & associates realty ltd.



**Erica Pang**  
604.723.3538  
epang@rennie.com  
rennie.com/ericapang

**rennie**