

# 522 Carlsen Place, Port Moody

\$659,000



**FAMILY FIRST** - fantastic family complex in the heart of Port Moody. 3 Bedroom / 3 Bathroom unit beautifully updated and move-in ready and offers tons of natural light. Ground level patio off the dining room offers a nice green space for your enjoyment. Large recreation room on the lower level is great space for family movie nights. Location couldn't be better - minutes from shopping and services, close to all levels of schools and excellent transit linking you to Coquitlam Centre and Skytrain Stations getting you into downtown Vancouver within 30 mins. 10 minute drive to beautiful Belcarra & White Pine Beach Parks & 5 minutes to Rocky Point Park and the trendy Brewery District. Something for everyone in the Family.

## KEY INFORMATION

MLS® R2367273

Residential Attached

North Shore Port Moody

3 Bedrooms

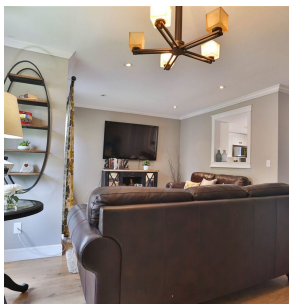
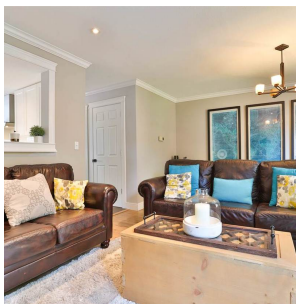
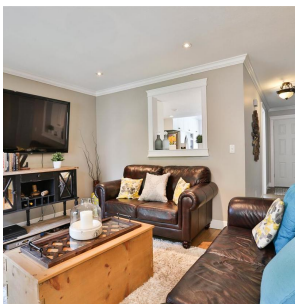
3 Bathrooms

1,575 SF

## FEATURES

Year Built: 1979

Listed By: rennie & associates realty ltd.



**Shelly Vellani** PREC\*

604.710.3681

svellani@rennie.com

rennie.com/shellyvellani

**rennie**