

# 2503 988 Quayside Drive, New Westminster

\$499,000



Waterfront RiverSky2 by Bosa, in vibrant New Westminster downtown, by Fraser River and Esplanade Boardwalk. Quick access to Skytrain with McInnes Overpass. Steps to River Market, shops and restaurants. 1 bedroom & 1 bath + work station with 9'4 ceiling, featuring Bosa's innovational design: pull-out ExtenTABLE can seat 8 people comfortably, SleepTHEATER's foldable daybed could be 3-seat sofa or guest bed in living rm, fun to move and play! stainless steel appliances, quartz countertops, large balcony with mountain, city and water view, 1 parking n 1 locker. GST paid already. Perfect to live-in or to invest. Public Open: Sat. May 25th, 2019 2pm-4pm

## KEY INFORMATION

MLS® R2366758

Residential Attached

Quay

1 Bedroom

1 Bathroom

523 SF

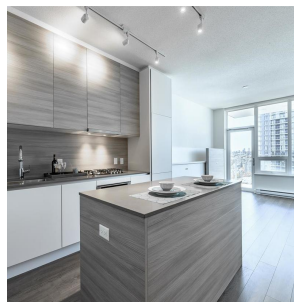
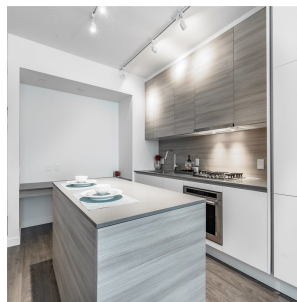
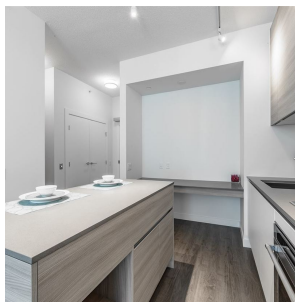
\$206.79 Maintenance Fees

## FEATURES

Year Built: 2019

Views: C

Listed By: rennie & associates realty ltd.



**Calvin Jiang**  
604.961.1698  
cjiang@rennie.com  
rennie.com/calvinjiang

**rennie**