

1402 6838 Station Hill Drive, Burnaby

\$648,900



Welcome to BELGRAVIA in "City In the Park"! Located in a lush, park like setting this 2 BEDROOM, 2 BATH homes boast over 1000 sq ft of living space w/ BEAUTIFUL VIEWS. Top quality concrete construction throughout this building and lots of updates in this unit. The fully UPDATED KITCHEN features S/S appliances, granite countertops, under mounted double sink, built-in microwave and much more. An open dining and family room area are warmed by a cozy GAS FIREPLACE incl in your main fee. The LARGE, fully covered balcony is great year round for BBQ's. Just steps away from SKYTRAIN, shopping, restaurants & parks. Comes w/ PARKING & STORAGE LOCKER. Call today for a private viewing!

KEY INFORMATION

MLS® R2366986

Residential Attached

South Slope

2 Bedrooms

2 Bathrooms

1,001 SF

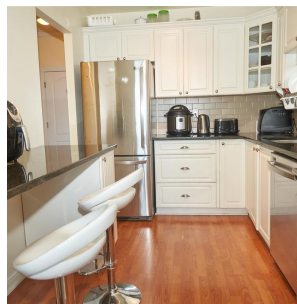
\$415.62 Maintenance Fees

FEATURES

Year Built: 1996

Views: Mountains and City

Listed By: rennie & associates realty ltd.



Linda Kang
604.787.5923
lkang@rennie.com
rennie.com/lindakang

rennie