

# 47474 Chartwell Drive, Chilliwack

\$699,900



LET THE KIDS PLAY! A family home situated on a safe & quiet, extra wide street. Surrounded by trees and farmland this 5 bed, 3 bath, 2 storey w/ bsmt home has a beautiful flat yard that backs onto grassy farmland. An inviting front deck & spacious entry leads to a private front room with a vaulted ceiling where you can cozy up to the fire and enjoy a tranquil space. Kitchen redo in 2009 with granite counters, eat-up bar, maple cabinets, s/s appliances & granite undermount sink. A breakfast nook & family room extends to a deck & overlooks the backyard. 4 very BRIGHT bedrooms upstairs, including a spacious master suite w/jetted tub & w/i closet. A desired DAYLIGHT basement has a kitchen & full bath (could be a 1 or 2 bed suite) Long flat driveway & a double car garage for the toys.

## KEY INFORMATION

MLS® R2371007

Residential Detached

Chilliwack

5 Bedrooms

4 Bathrooms

2,959 SF

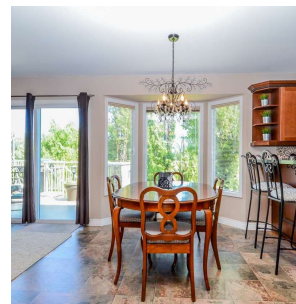
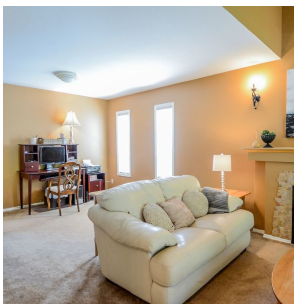
7,061 SF Lot

## FEATURES

Year Built: 1998

Views: FARM FIELDS & MOUNTAINS

Listed By: rennie & associates realty ltd.



**Kim Mallory** PREC\*  
604.316.3635  
kmallory@rennie.com  
rennie.com/kimmallory



**Clarke Mallory** PREC\*  
604.316.9917  
cmallory@rennie.com  
rennie.com/clarkemallory

**rennie**