

# 1004 2008 Rosser Avenue, Burnaby

\$749,000



This is your opportunity to own at SOLO District - Centrally located in Brentwood, Burnaby's most sought after community! Steps from Transit, Restaurants, Grocery, Shopping and much more! Get together with friends at Brown's or enjoy a coffee break at Starbucks. This spacious 2bed + 2bath features an open layout with bedrooms on opposite sides. Great for privacy. 1 Parking + 1 Storage is a bonus! The unit boasts imported cabinetry, s/s appliances, quartz counters, insuite laundry and air conditioning. Excellent amenities include a Club house, Exercise centre, Steam & Sauna, Rooftop patio, Dog park and exercise area! Perfect for a cozy home or an investment property! It wont last long!!!! We have accepted offer so open houses cancelled.

## KEY INFORMATION

MLS® R2372146

Residential Attached

Brentwood Park

2 Bedrooms

2 Bathrooms

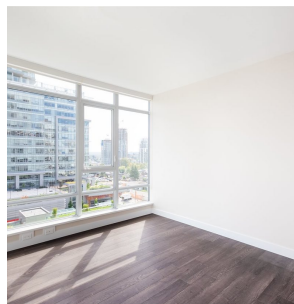
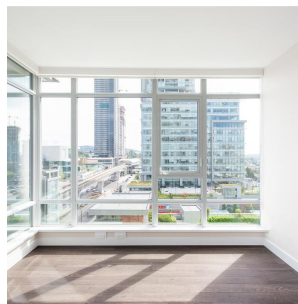
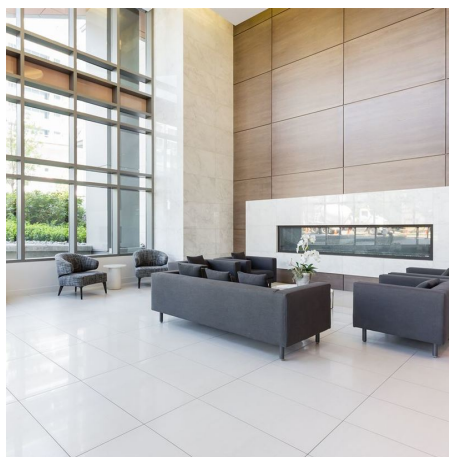
912 SF

\$449.62 Maintenance Fees

## FEATURES

Year Built: 2015

Listed By: rennie & associates realty ltd.



**Disa Lim**  
604.880.8604  
dlim@rennie.com  
rennie.com/disalim

**rennie**