

209 725 Marine Drive, Vancouver

\$489,900



MARINE+ FELL, by Anthem is a mixed-use low rise community offering 80 MOVE-IN READY modern homes ranging from 1 bdrm to 3 bdrm+ den. Centrally located on the Marine Drive corridor. Marine+ Fell is a short stroll from Capilano Mall, restaurants, cafes, markets, shops, and trails. This bright & functional South facing 1 BDRM home features 9 foot high ceilings, quartz countertops, laminate flooring, stainless steel appliances, front-loading washer and dryer, 1 parking stall, and 1 storage locker. Amenity Bonuses include: 1,000 sq.ft. entertainment lounge, kitchenette, and outdoor patio. Visit our Presentation Centre Saturday-Thursday (closed Friday) between 12-5pm. GST INCLUDED ON ALL HOMES!

KEY INFORMATION

MLS® R2372650

Residential Attached

Harbourside

1 Bedroom

1 Bathroom

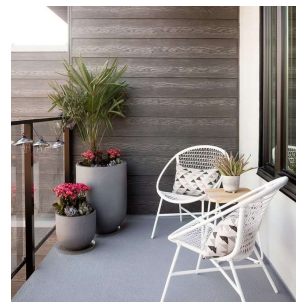
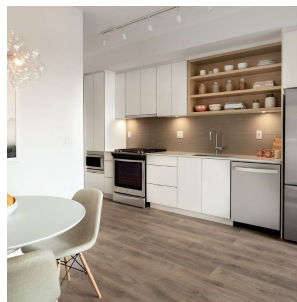
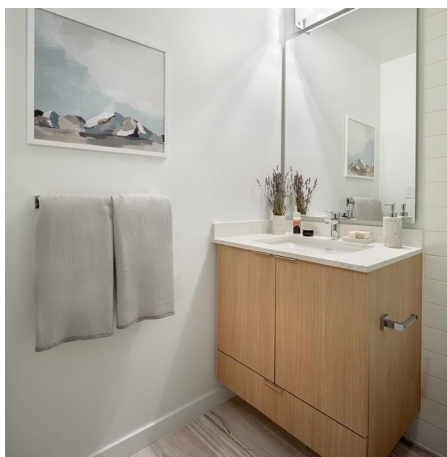
566 SF

\$252.27 Maintenance Fees

FEATURES

Year Built: 2018

Listed By: rennie & associates realty ltd.



Shelly Vellani PREC*

604.710.3681

svellani@rennie.com

rennie.com/shellyvellani

rennie