

1505 8 Smithe Mews, Vancouver

\$1,499,000



FLAGSHIP - Concord Pacific's premier luxury building in Coopers' Park neighbourhood. Featuring commanding waterfront views, Coopers Park and the spectacular seawalk right at your door. Suites are climate controlled using air cooling system, feature hardwood floors, imported European kitchen system with lacquered cabinets, top of the line appliance package including Sub-zero refrigerator, Viking 5 burner gas cooktop, Miele wall oven, Miele dishwasher & Miele hood fan, marble countertops & backsplash. Enjoy the concierge service & Esprit City Club, including 60' indoor pool, steam room & sauna, fitness room, billiards room, multi purpose room with kitchen, 2 lane 10 pin bowling alley. A must see.

KEY INFORMATION

MLS® R2374418

Residential Attached

Yaletown

2 Bedrooms

2 Bathrooms

1,217 SF

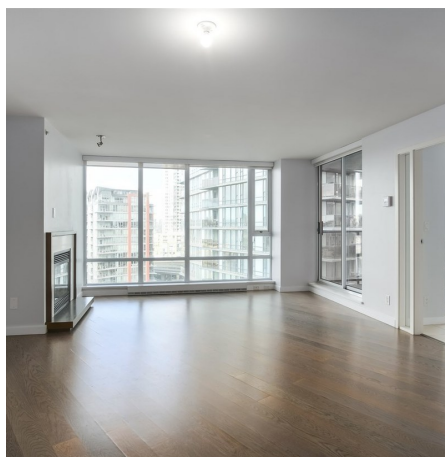
\$552.86 Maintenance Fees

FEATURES

Year Built: 2008

Views: OCEAN

Listed By: rennie & associates realty ltd.



Charlie Kim PREC*
604.767.1531
ckim@rennie.com
rennie.com/charliekim

rennie