

1705 612 Sixth Street, New Westminster

\$719,900



The Woodward built by Bosa is one of the most desirable building located in the heart of sought after Uptown neighbourhood with direct access to Royal City Centre below. Medical clinics, shopping, eateries and all conveniences are at your doorstep. No rentals, proud owners live here. Call home this well cared 2 Br + Den large corner unit with floor to ceiling windows, gas F/P and Unobstructed Views from every room to enjoy. Bring your house sized furniture! Step out to the wrap around balcony to entertain, BBQ or just relax and take in the views of the North Shore Mountains, Fraser River and the Gulf Islands. 2 parking and a storage locker included. Bike room, exercise and recreational facility. PUBLIC OPEN HOUSE: SUN. JUNE 23, 2-4 PM

KEY INFORMATION

MLS® R2375821

Residential Attached

Uptown

2 Bedrooms

2 Bathrooms

1,380 SF

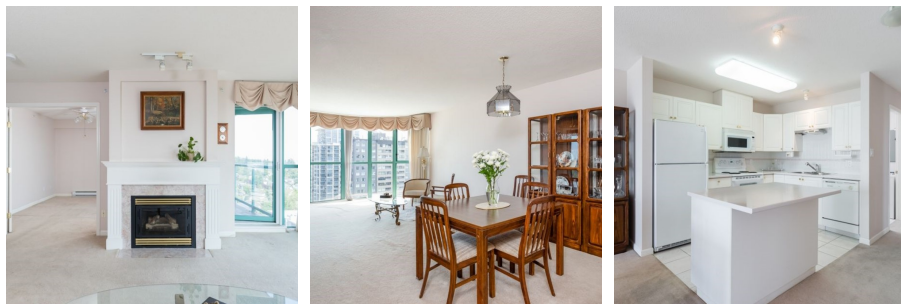
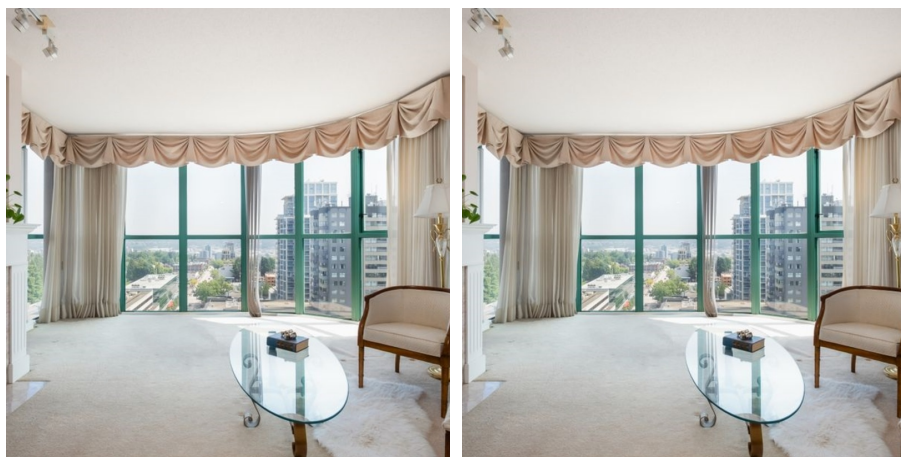
\$508.61 Maintenance Fees

FEATURES

Year Built: 1999

Views: AMAZING MOUNTAIN/WATER /CITY

Listed By: rennie & associates realty ltd.



Brandon Price PREC*
604.765.9555
bprice@rennie.com
rennie.com/brandanprice



Brigitta Kreiner
778.892.4447
bkreiner@rennie.com
rennie.com/briggittakreiner

rennie