

410 3156 Dayanee Springs Boulevard, Coquitlam

\$568,000



Come see this breathtaking apartment in Tamarack by Polygon at the base of Westwood Plateau. This two bedroom Whistler-inspired urban retreat features bright and open layouts that overlooks the garden with mountain views. Topped with a high-vaulted living room, granite countertops, warm laminate flooring, sleek stainless steel appliances, one parking and locker space, private Timbers Club membership, and over 7,000 sft of amenities, will make you feel as if your home is in a resort! Living here, enjoy easy access to all levels of schools, transit & amenities; Evergreen Skytrain, LaFarge Lake, Coquitlam Mall, Pinetree Secondary & Douglas College are all a short walk away.

KEY INFORMATION

MLS® R2381522

Residential Attached

Westwood Plateau

2 Bedrooms

2 Bathrooms

915 SF

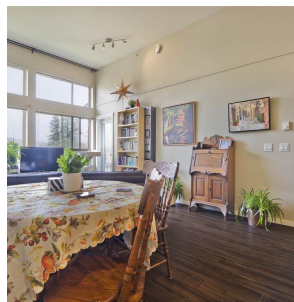
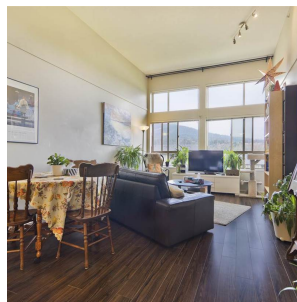
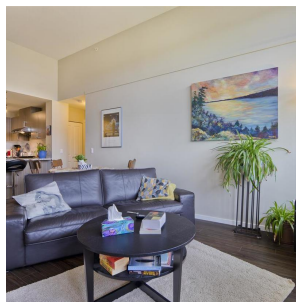
\$303.84 Maintenance Fees

FEATURES

Year Built: 2012

Views: MOUNTAIN / GARDEN

Listed By: rennie & associates realty ltd.



Hanson Lu PREC*
604.787.2578
hlu@rennie.com
rennie.com/hansonlu

rennie