

1 258 Camata Street, New Westminster

\$800,000



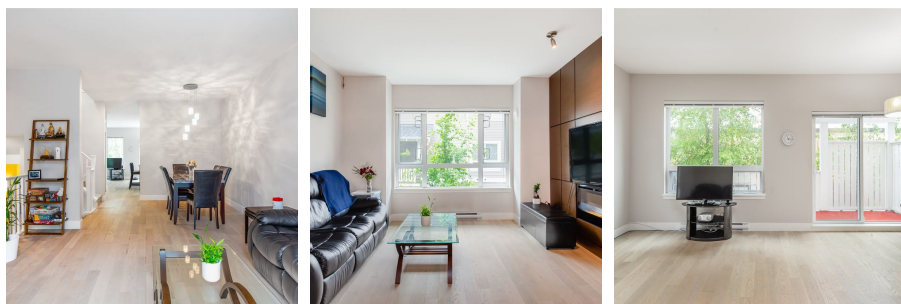
PRICED TO SELL: Rarely available in one of the largest homes in Canoe at Port Royal. This beautiful 3 bed/3 bath townhouse offers a bright and excellent floor plan including Stainless Steel Appliances, Gas Cook Top, Hardwood flooring, High Ceilings, Quartz Counter Tops, Flex space upstairs ideal for an office and Side-by-Side Double Car Garage. Close to shops at Queensborough Landing & Market Crossing, Schools and Parks. Fantastic family oriented neighbourhood. **OPEN HOUSE: SAT/SUN AUG 10/11 FROM 2-4PM**

KEY INFORMATION

MLS® R2385073
Residential Attached
Queensborough
3 Bedrooms
3 Bathrooms
1,766 SF

FEATURES

Year Built: 2014
Listed By: rennie & associates realty ltd.



Andy Mah PREC*
604.779.9382
amah@rennie.com
rennie.com/andymah

rennie