

2204 1182 Westwood Street, Coquitlam

\$694,900



Welcome to Sophora at the Park by Polygon - the crown jewel of Coquitlam Town Centre. Set in a world where shopping in flagship stores and trying the latest cuisine is as effortless as hopping on a SkyTrain to Vancouver or strolling through the green paths, Sophora at the Park gives you a brilliantly vibrant lifestyle, and unmatched value in every sense. Enjoy air-conditioned interiors, Bosch appliances and a spa ensuite with his-and-hers sinks. Visit our sales office at #101-1135 Pipeline Road, Coquitlam, open 12-6pm except Fridays.

KEY INFORMATION

MLS® R2387443

Residential Attached

North Coquitlam

2 Bedrooms

2 Bathrooms

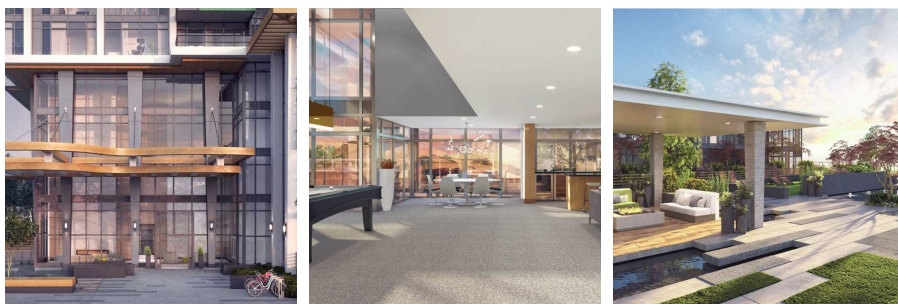
782 SF

\$231.14 Maintenance Fees

FEATURES

Year Built: 2022

Listed By: rennie & associates realty ltd.



Daniel O'Hearn PREC*
778.384.2665
dohearn@rennie.com
rennie.com/danielohearn

rennie