

47422 Wittenberg Place, Chilliwack

\$799,900



WELCOME TO PLEASANTVILLE A rare find. This family home sits on a quiet CUL DE SAC surrounded by great neighbours. Backing onto greenspace this executive 6 bed 4 bath home has a coveted 3 BAY GARAGE. Enter into a 19 ft cathedral entrance to hardwood floors, & an open concept living space. The livingroom has a floor to ceiling rock fireplace. A spacious chef's kitchen w. gas stove, has granite counters + island and tons of space for your your farmhouse table. Also, on the main a huge mudroom plus a bonus room off the kitchen waiting for your ideas. Lounge year round on a spacious covered deck. Upstairs: 4 bedrooms with a peaceful & private master suite & spa style bath with soaker tub and w/i closet. BSMT w separate entry has 2 bed, full bath wet bar & laundry r/i. AC

KEY INFORMATION

MLS® R2387515

Residential Detached

Chilliwack

6 Bedrooms

4 Bathrooms

3,240 SF

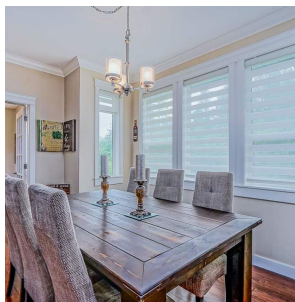
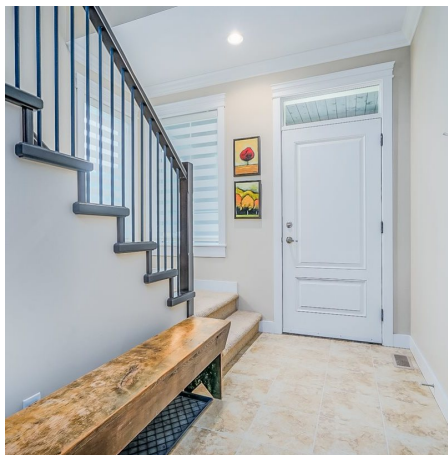
7,208 SF Lot

FEATURES

Year Built: 2014

Views: NORTHERN MOUNTAINS AND VALLEY

Listed By: rennie & associates realty ltd.



Kim Mallory PREC*
604.316.3635
kmallory@rennie.com
rennie.com/kimmallory



Clarke Mallory PREC*
604.316.9917
cmallory@rennie.com
rennie.com/clarkemallory

rennie