

1503 1283 Howe Street, Vancouver

\$512,000



Tate - Brand new Yaletown building, NE facing one bed on 15th floor. Featuring hardwood looking flooring, SS apps, stone counter top and much more. Open flexible and functional layout. Close to amenities (Skytrain station, Yaletown shopping and restaurant).

KEY INFORMATION

MLS® R2387354

Residential Attached

Downtown

1 Bedroom

1 Bathroom

475 SF

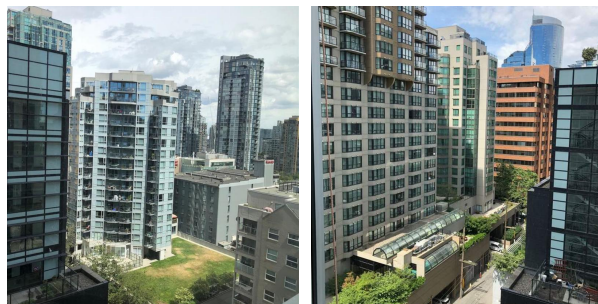
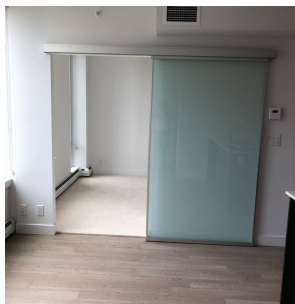
\$193.00 Maintenance Fees

FEATURES

Year Built: 2019

Views: city

Listed By: rennie & associates realty ltd.



Art Seroff PREC*
778.223.0033
aseroff@rennie.com
rennie.com/artseroff



Alvin Li
604.671.1397
ali@rennie.com
rennie.com/alvinli

rennie