

# 205 3888 Norfolk Street, Burnaby

\$699,000



Nestled beside the woods of Broadview Park, you will find this charming 2 bdrm, 2 bath TH at Parkside Greene. Entertainment is a breeze in the spacious livrm/dinrm w/ laminate wood flrs, custom millwork, new lighting, f/p, OH ceilings & balcony off livrm. Prepare your fav dishes in the gourmet kitch w/ s/s appliance incl Bosch d/w, stone ctrs w/ breakfast bar seating. Retreat upstairs to the mst bdrm w/ extra cabinetry & the 2nd bdrm w/ wood moulding wall accents & custom cabinetry for extra storage. Soak in the 2 spa-like baths w/ soaker tub & stone ctrs. Very convenient location, close to Starbucks, markets, restaurants, schools, Metrotown & quick access to Hwy 1 & major routes to Downtown & N. Shore. 1 Parking & 1 locker. TO SEE IS TO FALL IN LOVE.

## KEY INFORMATION

MLS® R2389028

Residential Attached

Central Burnaby

2 Bedrooms

2 Bathrooms

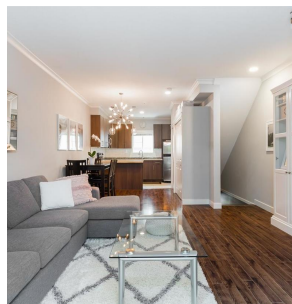
1,133 SF

## FEATURES

Year Built: 2009

Views: TREE-LINED STREETS

Listed By: rennie & associates realty ltd.



**Danny Chow** PREC\*  
604.765.2469  
dchow@rennie.com  
rennie.com/dannychow



**Salina Kai** PREC\*  
604.773.7013  
skai@rennie.com  
rennie.com/salinakai

**rennie**