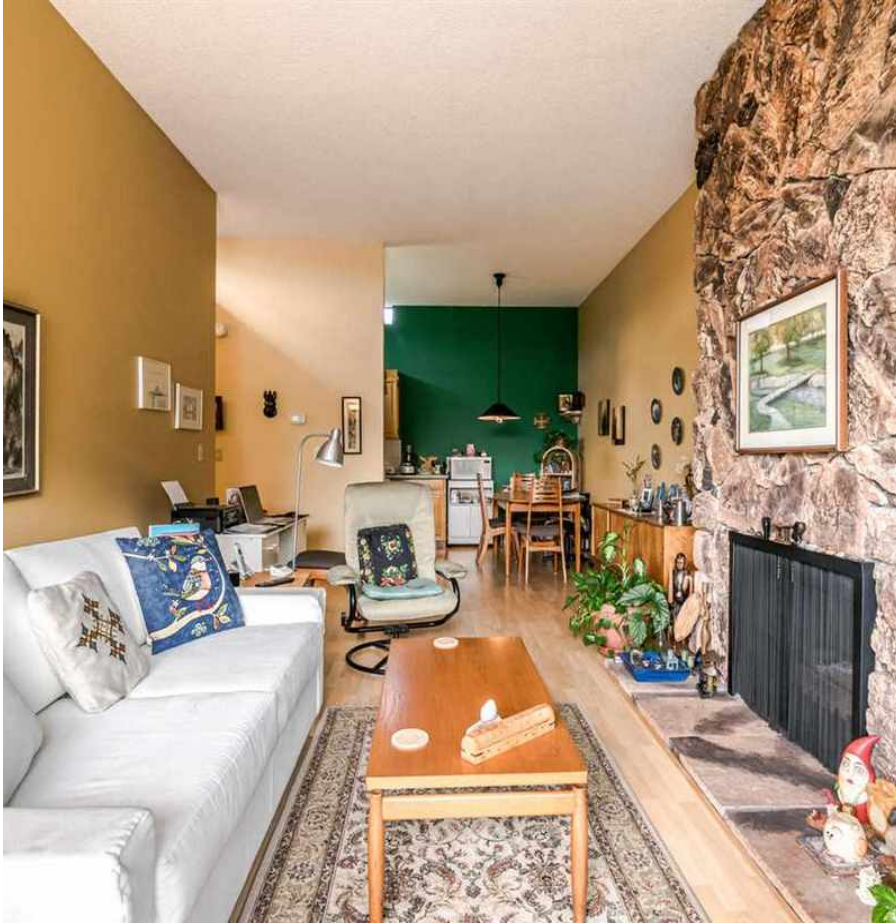


305 1516 Charles Street, Vancouver

\$499,999



RARELY AVAILABLE TOP FLOOR SOUTH FACING 1 BEDROOM! This beautiful and bright 701 sq ft home is located on one of the most desirable streets near Commercial Drive. Come home to your spacious penthouse near the Drive that features high 10'3 ceilings, north shore mountain views from your balcony, laminate flooring, updated kitchen and bath, and a gorgeous floor to ceiling stone fireplace(gas). Cook in your sunshine filled kitchen with ceiling windows that bring in natural light. Steps to transit, shops, restaurants and much more! Comes with 1 parking 1 storage locker. depreciation report 2014, roof 2007, boiler 2001 ,h/w tank 2009. Pets and Rentals Allowed (no size or amount limit) This is a must see! Call us today.

KEY INFORMATION

MLS® R2389167

Residential Attached

Grandview Woodland

1 Bedroom

1 Bathroom

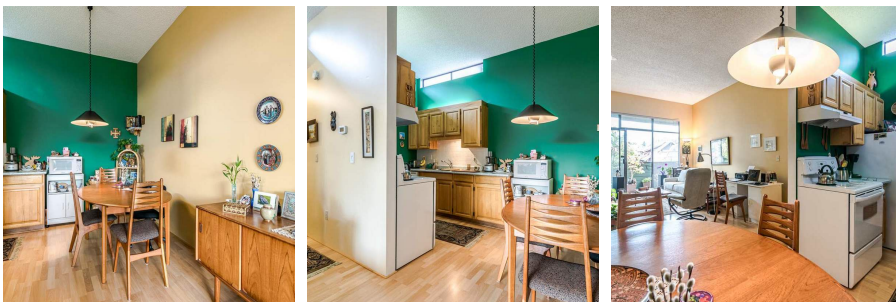
701 SF

\$469.49 Maintenance Fees

FEATURES

Year Built: 1977

Listed By: rennie & associates realty ltd.



Paul Wong PREC*
604.716.0483
pwong@rennie.com
rennie.com/paulwong

rennie