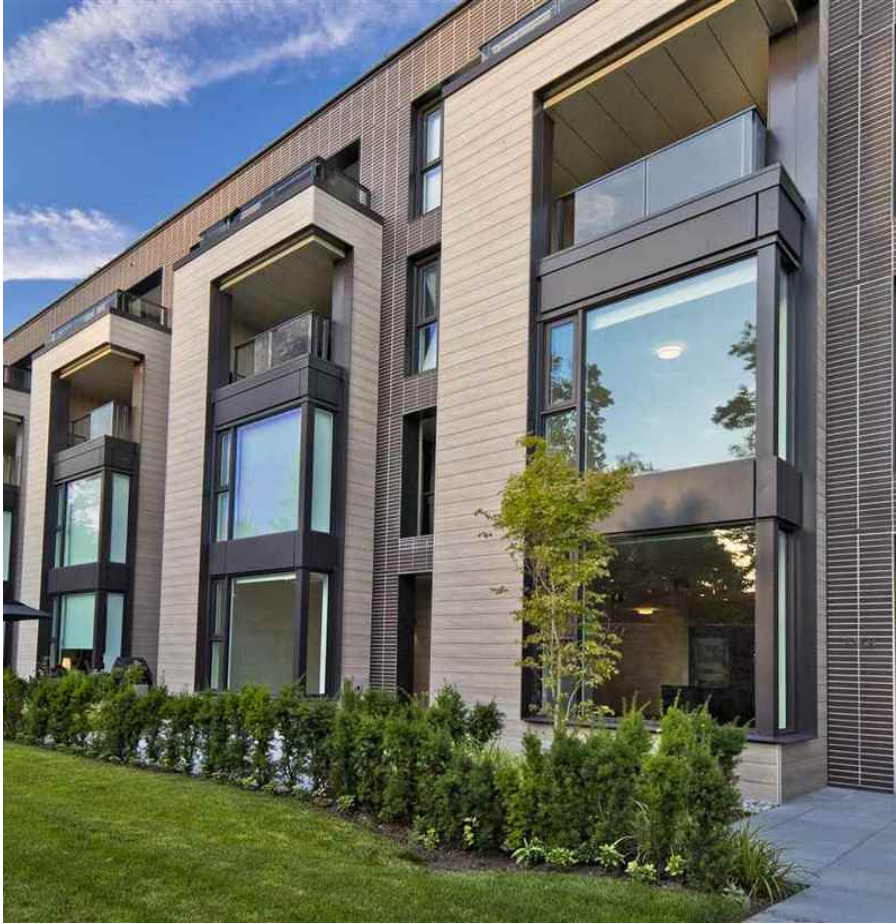


# 7268 Adera Street, Vancouver

\$2,999,900



BRAND NEW concrete townhouse, on the legendary grounds of Shannon Wall Centre Kerrisdale on Vancouver's coveted West Side. As part of an irreplaceable property in Vancouver's best neighbourhood, these rare homes are secluded behind heritage stone walls, mature trees and generous setbacks. Elegant new residences and contemporary amenities intermingle with Vancouver's rare heritage Mansion via cobblestoned lanes, pathways and formal gardens with parks, ponds and unique places to gather and celebrate. This spectacular 10-acre landscape allows for an abundance of fresh green space and beautiful architecture. This luxury home facing prestigious Adera St along with millions dollars home owner neighbors! Enjoy the private yard and patio but no maintenance worry! Open House Aug17-18 Sat&Sun, 2-4PM

## KEY INFORMATION

MLS® R2390780

Residential Attached

South Granville

3 Bedrooms

3 Bathrooms

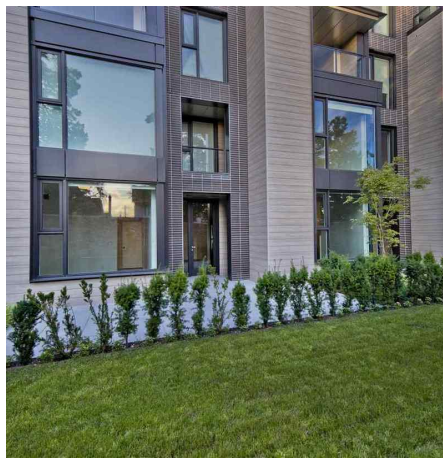
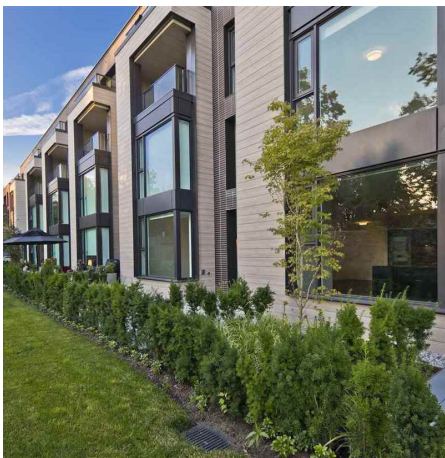
2,060 SF

## FEATURES

Year Built: 2019

Views: OGDARDS

Listed By: rennie & associates realty ltd.



**Hanson Lu** PREC\*  
604.787.2578  
hlu@rennie.com  
rennie.com/hansonlu

**rennie**