

Ph1006 3451 Sawmill Crescent, Vancouver

\$649,900



This stunning Penthouse level NE corner 2bd+flex located in the highly anticipated Quartet's Midrise-Opus. Perfectly laid out, this home features a luxurious stainless steel Jenn-Air appliance pkg w/ top of line finishes throughout incl laminate flooring, Kohler fixtures, high efficiency heating&cooling system & overheight ceilings. Incredible private rooftop terrace over600SF, an entertainer's dream. Just steps away to Save On, Starbucks, restaurants, banks&shops. Residents will have access to ClubCentral, the 14,000+SF private fitness&aquatic centre&additional amenities including an onsite concierge, secure delivery storage for convenient pick up, music&study rms, Bocce court, and a high-end full size kitchen for large gatherings w/ friends&family. Anticipated completion Spring 2020!

KEY INFORMATION

MLS® R2395583

Residential Attached

South Marine

2 Bedrooms

2 Bathrooms

721 SF

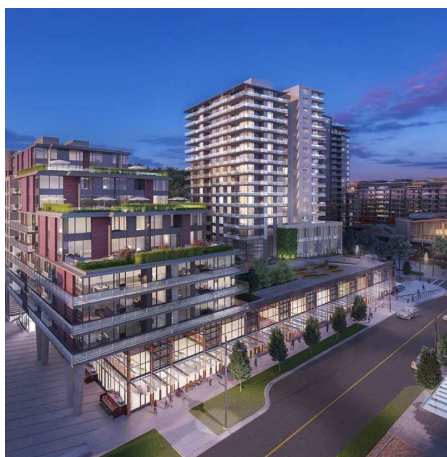
\$299.61 Maintenance Fees

FEATURES

Year Built: 2020

Views: CITY AND GREEN TREE VIEWS

Listed By: rennie & associates realty ltd.



Plan C-1006
2 Bedroom



© 2019 RENNIE REALTY INC.



Salina Kai PREC*
604.773.7013
skai@rennie.com
rennie.com/salinakai

rennie