

8591 Ashleigh Mcivor Drive, Whistler

\$1,999,000



Build your Whistler dream home in Whistler's Baxter Creek neighbourhood. This 11,935 sq. ft. lot has a private location at the end of the cul de sac. Residents enjoy exclusive access to the Baxter Creek Resident's Club featuring salt water pool, hot tub and fire pit gathering area. Start planning your Whistler legacy today.

KEY INFORMATION

MLS® R2399567

Land Only

Rainbow

0 Bedrooms

0 Bathrooms

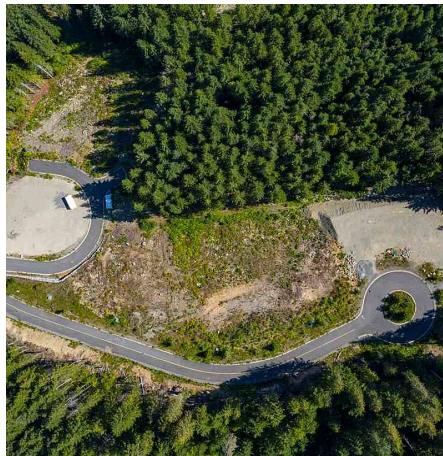
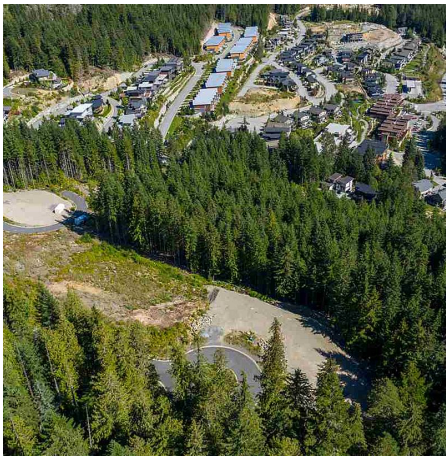
0 SF

11,935 SF Lot

FEATURES

Views: Mountain

Listed By: Whistler Real Estate Company Limited



rennie