

608 4638 Gladstone Street, Vancouver

\$799,000



Enjoy STUNNING mountain views from this rarely available gem in the heart of the Norquay Village Neighborhood. This NW corner unit, 2 bed + den home at Kensington Gardens by Westbank is conveniently located close to Norquay Village shopping, Nanaimo Skytrain station, a new T&T Supermarket downstairs and only 15 minutes to downtown, Richmond and Burnaby - a true central location. Along with beautifully design interiors, the residents-only amenities include a theater room, outdoor pool, hot tub, residents lounge and a large centre courtyard to name a few. 2 side x side parking. School Catchment: George T. Cunningham Elementary. Gladstone Secondary. Laura Secord Elementary (French Immersion), Vancouver Technical Secondary (French Immersion). Don't miss out! OPEN HOUSE OCT12|11AM-1PM

KEY INFORMATION

MLS® R2401682

Residential Attached

Victoria

2 Bedrooms

2 Bathrooms

790 SF

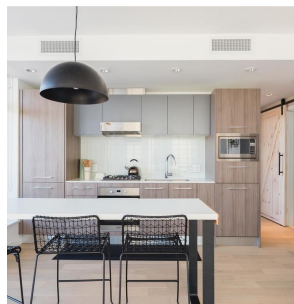
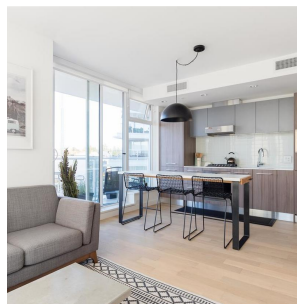
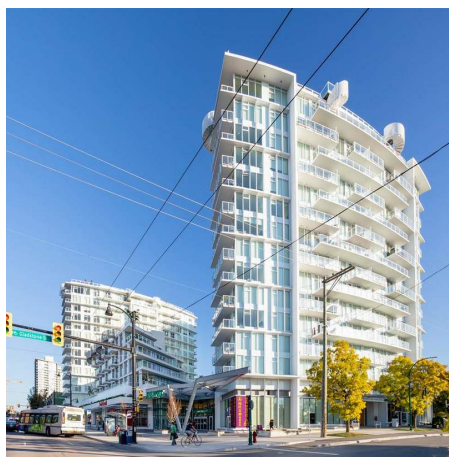
\$341.11 Maintenance Fees

FEATURES

Year Built: 2018

Views: MOUNTAIN VIEWS

Listed By: rennie & associates realty ltd.



Matthew Lee
778.882.2673
mlee@rennie.com
rennie.com/matthewlee

rennie