

# 101 3021 St George Street, Port Moody

\$999,900



END UNIT, BRAND NEW TOWNHOUSE at GEORGE in the heart of beautiful Port Moody. Near Rocky Point park, trails, 3 MIN WALK to Evergreen skytrain stn, eateries/cafes/shops, all levels of schools. Yes, it is the PERFECT LOCATION. This MODERN HOME boasts 3 spacious BDRM above+a separate BDRM on lower level. Feels spacious with this functional layout for family and entertaining. Luxurious Ensuite features HEATED FLOORING, DOUBLE SINKS and CABINETS for linens. LAMINATE FLOORING THROUGH OUT incl STAIRS (upgrade). DOUBLE SIDE by SIDE garage is EV vehicle ready. This END UNIT has largest fenced yard+ south facing deck off kitchen for BBQs. Call now for a private showing!

## KEY INFORMATION

MLS® R2440031

Residential Attached

Port Moody Centre

4 Bedrooms

3 Bathrooms

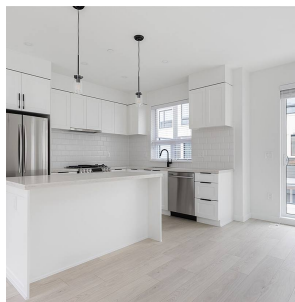
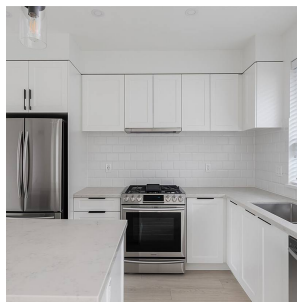
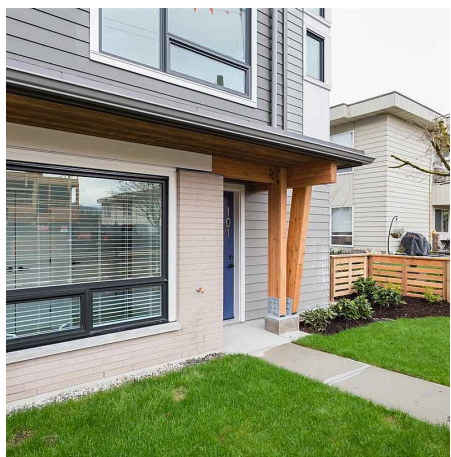
1,358 SF

## FEATURES

Year Built: 2020

Views: North Mountains

Listed By: rennie & associates realty ltd.



**Linda Kang**  
604.787.5923  
lkang@rennie.com  
rennie.com/lindakang

**rennie**