

# 1906 530 Whiting Way, Coquitlam

\$778,800



Onni's Brookmere. Beautifully crafted 3 bed/2 bath 1000sf corner unit. Enjoy the VIEWS Coquitlam has to offer with your almost 300sq.ft balcony. Unit is equipped with SS appliances, gas cooktop, quartz countertops, soaker tub, and walk-in closet. The location is unbeatable, central to the new developing Lougheed Town Centre and just minutes away from skytrain.

## KEY INFORMATION

MLS® R2441432

Residential Attached

Coquitlam West

3 Bedrooms

2 Bathrooms

990 SF

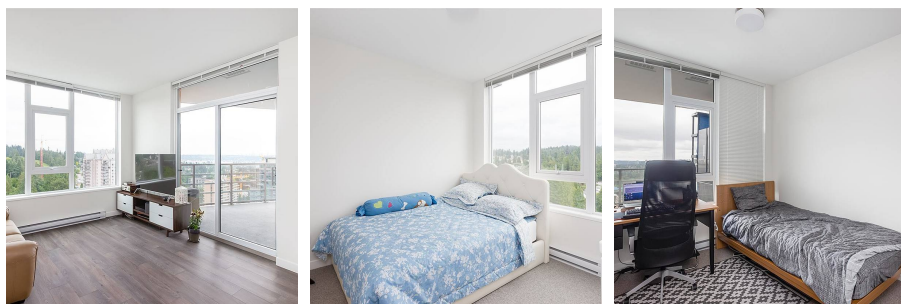
\$396.18 Maintenance Fees

## FEATURES

Year Built: 2019

Views: MOUNTAINS, RIVER AND CITY

Listed By: rennie & associates realty ltd.



**Harjas Panesar**

778.968.8262

[hpanesar@rennie.com](mailto:hpanesar@rennie.com)

[rennie.com/harjaspanesar](http://rennie.com/harjaspanesar)

**rennie**