

# 2309 1480 Howe Street, Vancouver

\$799,000



Architect Series 1-bed pied-à-terre. Optimised floor plan featuring high ceilings, natural light and a muted colour palette that, taken in aggregate, celebrate a minimalist design. This home opens with a long gallery foyer, perfect for displaying an art collection. It leads into an open-concept kitchen, and living and dining areas with views of false creek to the east from a generously proportioned balcony. BIG-designed interiors feature a linear kitchen with corian counters, copper backsplash, european matte-laminated cabinets + miele appliance package. Large format travertine, duravit toilet + sink, and BIG-designed custom plumbing fixtures by Kohler stand out in the spa like bath. Be among the first to own a piece of this landmark building, Vancouver House.

## KEY INFORMATION

MLS® R2442290

Residential Attached

Yaletown

1 Bedroom

1 Bathroom

515 SF

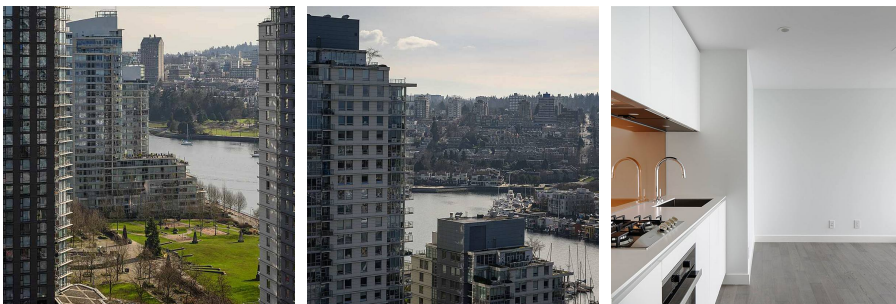
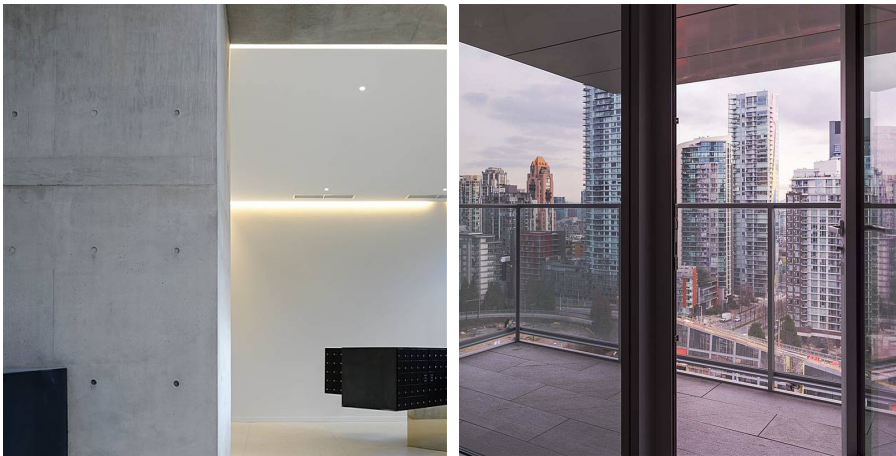
\$410.66 Maintenance Fees

## FEATURES

Year Built: 2020

Views: South East - City & Water

Listed By: rennie & associates realty ltd.



**Christopher Boyd** PREC\*  
604.351.0533  
cboyd@rennie.com  
rennie.com/christopherboyd



**Jane Chu** PREC\*  
778.886.3303  
janechu@rennie.com  
rennie.com/janechu

**rennie**