

62 46840 Russell Road, Chilliwack

\$429,900



Whistler inspired Timber Ridge! This IMMACULATE and BRIGHT 3bed/3bath home has seen several updates over the years including high end laminate on the main floor, central vac, stainless steel appliances, hot water tank, and a backyard makeover w/ artificial turf. The open concept kitchen has added spice cabinets and pull outs for great functionality. Master bedroom is fit for a queen w/ a large walk in closet and a 3 piece ensuite w/ walk in shower. DOUBLE CAR GARAGE and accessible 3'6" crawl space for lots of storage. This home is MOVE-IN READY and super clean. Located in the popular Promontory area close to walking trails and shopping. Come take a look you won't be disappointed!

KEY INFORMATION

MLS® R2445892

Residential Attached

Chilliwack

3 Bedrooms

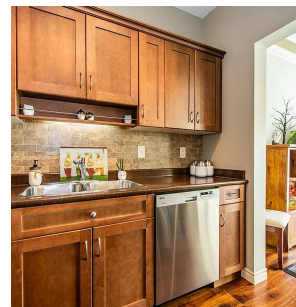
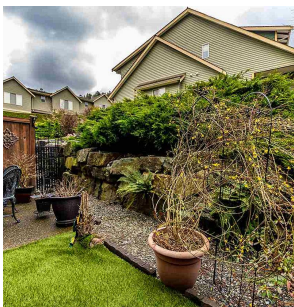
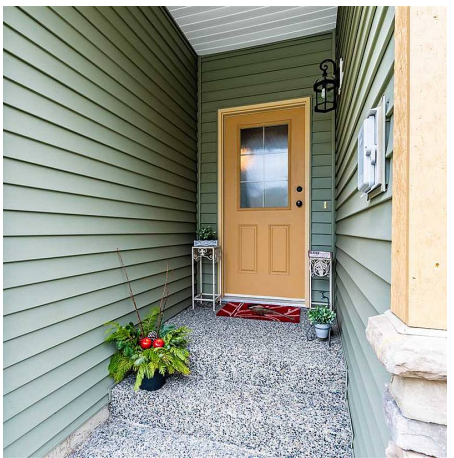
3 Bathrooms

1,512 SF

FEATURES

Year Built: 2005

Listed By: rennie & associates realty ltd.



Clarke Mallory PREC*
604.316.9917
cmallory@rennie.com
rennie.com/clarkemallory

rennie