

307 2559 Parkview Lane, Port Coquitlam

\$459,900



Presenting you with a fantastic opportunity to become an owner of this beautiful South-West corner 2 bdrm/2 bath home at one of the nicest complexes in Central Port Coquitlam, THE CRESCENT by BOSA. Over 1,100 sqft of space feature a well-thought out layout, S/S appliances, laminate floor, 2 balconies and a greenbelt view. Well-managed complex with numerous upgrades, amongst which are balconies/decks, hallways/lobbies, elevators' interiors and roof. Great amenities: gym, party room, pool table, sauna and a guest suite. Steps away from Gates Park, PoCo Trail Head, all levels of schools, shopping and restaurants. Comes with 2 parking stalls and a storage locker. 2 pets and 10 rental units are allowed. Showings by appointments only.

KEY INFORMATION

MLS® R2447050

Residential Attached

Central Port Coquitlam

2 Bedrooms

2 Bathrooms

1,117 SF

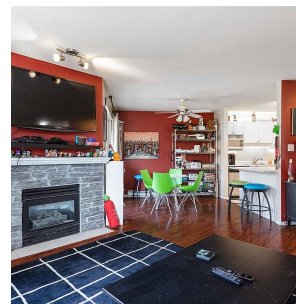
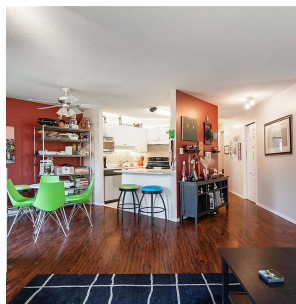
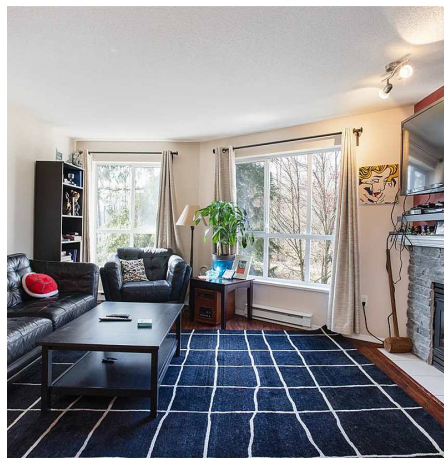
\$434.37 Maintenance Fees

FEATURES

Year Built: 1997

Views: BEAUTIFUL GREENBELT

Listed By: rennie & associates realty ltd.



Art Seroff PREC*
778.223.0033
aseroff@rennie.com
rennie.com/artseroff

rennie