

# 1301 1888 Gilmore Avenue, Burnaby

\$618,000



Full-size North-East corner One Bedroom and Den home in outstanding TRIOMPHE! Over 600 SF of the luxurious living space and a tremendous 144 SF balcony. One of the best layouts that you can find in the area: spacious, a lot of natural light, large kitchen and big den which can easily be a guest room. This beautiful home features 9' ceilings, central A/C and heating, high-end built-in Bosch appliances package, exceptional materials and contemporary designs. Enjoy a 13,000 sqft resort style 3-storey amenity pavilion that has everything: party, business, music/game rooms, outdoor fire pit & BBQ, huge gym and yoga studio, steam rooms, heated rooftop swimming pool and hot tub. In addition, concierge & guest suite. One parking and storage locker are included. Showings by appointment.

## KEY INFORMATION

MLS® R2448185

Residential Attached

Brentwood Park

1 Bedroom

1 Bathroom

618 SF

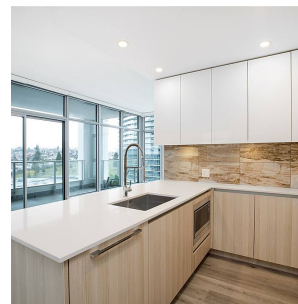
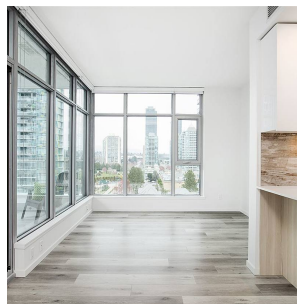
\$259.56 Maintenance Fees

## FEATURES

Year Built: 2020

Views: CITY

Listed By: rennie & associates realty ltd.



**Art Seroff** PREC\*  
778.223.0033  
aseroff@rennie.com  
rennie.com/artseroff

**rennie**