

# 2201 5611 Goring Street, Burnaby

\$780,000



The LEGACY building in a quiet and yet convenient location right above Holdom Skytrain Station in North Burnaby - enjoy the panoramic city and mountain view from 22/F. Over 1,000 sq.ft. 2 bedrooms 2 bathroom unit with TWO parking stalls and storage locker. NEW Brentwood Mall, BCIT, SFU, Burnaby Mountain and Golf Course locates in close proximity. Amenities include Huge Rooftop garden on 4/F, clubhouse with gym, steam room, and hot tub.

## KEY INFORMATION

MLS® R2449024

Residential Attached

Central Burnaby

2 Bedrooms

2 Bathrooms

1,046 SF

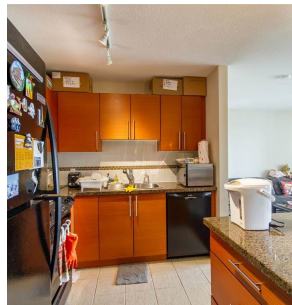
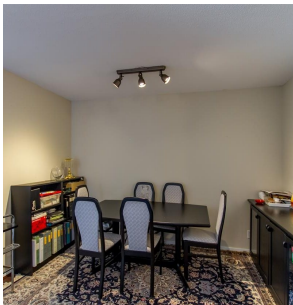
\$351.11 Maintenance Fees

## FEATURES

Year Built: 2008

Views: NORTH SHORE MOUNTAIN VIEW

Listed By: rennie & associates realty ltd.



**Vivien Ma** PREC\*  
604.828.2268  
vma@rennie.com  
rennie.com/vivienma

**rennie**