

701 6588 Nelson Avenue, Burnaby

\$599,900



Welcome to The Met by award winning developer Concord Pacific. Your East facing 1 bed + den home sits on the quiet side of the building facing Lobley Park. This efficient floorplan features 8'8 ceilings, Blomberg appliance package, upgraded engineered hardwood floors, quartz countertops, marble backsplash & beautifully tiled marble bathrooms. First class amenities include Concierge, gym, pool, yoga studio, a golf simulator, karaoke room, lounge/grand dining room with full kitchen, bowling alley and much more. Steps to all amenities: Metrotown, Crystal Mall, T&T, Library, Central Park, Sky Train, community centres, multiple restaurants & cafes and much more. 1 large parking and 1 storage included. Call now!

KEY INFORMATION

MLS® R2453791

Residential Attached

Metrotown

1 Bedroom

1 Bathroom

611 SF

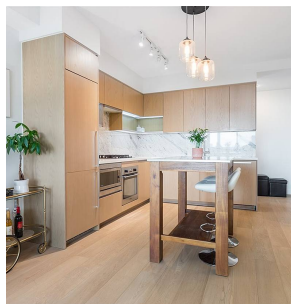
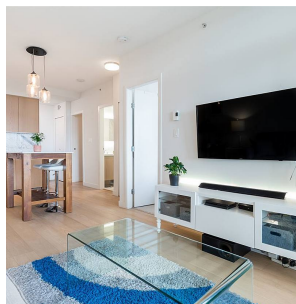
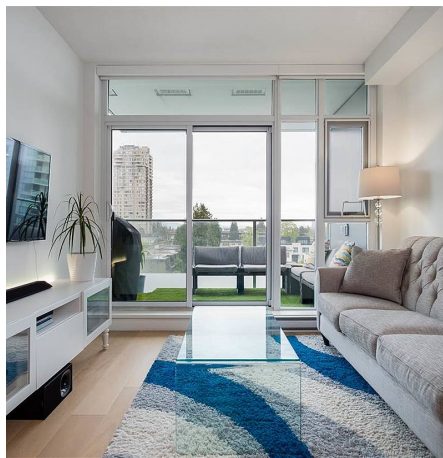
\$216.27 Maintenance Fees

FEATURES

Year Built: 2015

Views: PARK

Listed By: rennie & associates realty ltd.



Tracy Lam PREC*
778.688.8035
tlam@rennie.com
rennie.com/tracylam

rennie