

2007 9868 Cameron Street, Burnaby

\$599,900



Panoramic unobstructed northwest views from the living room with floor to ceiling windows in this immaculate 2 bdrm and 2 bath unit that leads to a nice covered deck. This 840' unit features stainless steel appliances, granite counter-tops, and laminate hardwood flooring throughout. Silhouette North Tower is a well-managed building with low strata fee and on-site caretaker, connected to shopping complex with Save On Food, Shoppers, Tim Hortons, TD Bank and more. Walking distance to Lougheed Mall, bus stop, Skytrain, shopping, restaurants, library, school, community centre. 3D virtual tour is available for your viewing.

KEY INFORMATION

MLS® R2453239

Residential Attached

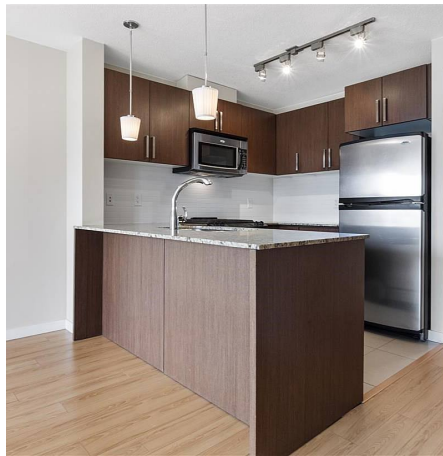
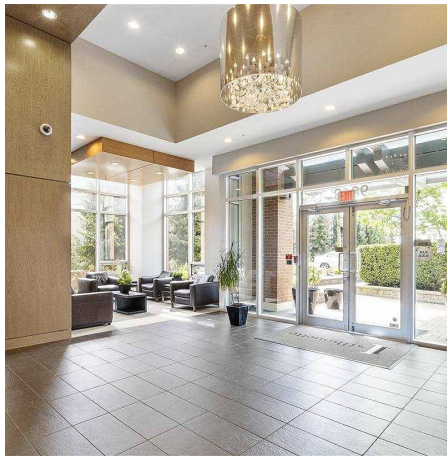
Sullivan Heights

2 Bedrooms

2 Bathrooms

840 SF

\$276.21 Maintenance Fees

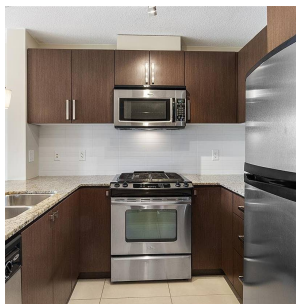


FEATURES

Year Built: 2009

Views: BURNABY MOUNTAIN & CITY

Listed By: rennie & associates realty ltd.



Vivien Ma PREC*
604.828.2268
vma@rennie.com
rennie.com/vivienma

rennie