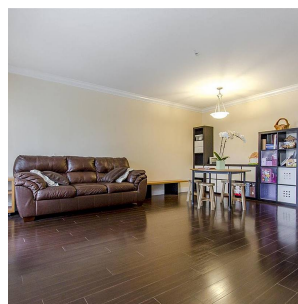
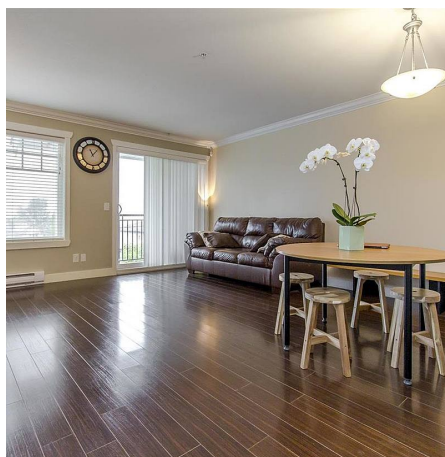


301 4025 Norfolk Street, Burnaby

\$810,000



Rare find spacious 2 level town home with 3 bedrooms plus Den and 2.5 baths at Norfolk Terrace, the best locations in the complex. This bright Corner Unit comes with lots of windows & a balcony facing North Shore mountain view. It features an open concept living space, kitchen w/ granite counters, stainless appliances, laminate floors, crown moldings, cozy fireplace. Den with large window, can be turned into a fourth bedroom for guest. Powder room on the main floor. Steps to Broadview Park with tennis, playgrounds & trails. Close to Hwy 1 and mins away from Gilmore Skytrain, BCIT, Brentwood & Metrotown. Comes with 2 parking stalls and a locker. Cascade Heights Elementary & Moscrop Secondary. Our next showing is 12:15-1:15pm on Tue, Feb 16 by appointment only.

KEY INFORMATION

MLS® R2455664

Residential Attached

Central Burnaby

3 Bedrooms

3 Bathrooms

1,254 SF

FEATURES

Year Built: 2008

Views: North Shore Mountains

Listed By: rennie & associates realty ltd.



Vivien Ma PREC*
604.828.2268
vma@rennie.com
rennie.com/vivienma

rennie