

304 2200 Douglas Road, Burnaby

\$829,000



Welcome to the Affinity by Bosa, located in the heart of North Burnaby. This beautiful two bedroom, two bathroom condo is spacious and bright with floor to ceiling windows, an open kitchen outfitted with granite countertops and stainless steel appliances. The large patio is just off the tranquil garden and perfect for entertaining, pets, kids and relaxing. This unit includes in suite laundry, two underground secured parking spaces and two storage lockers. The building hosts incredible amenities such as a fully equipped gym, social lounge, rooftop zen garden, and guest suite. Just steps from the skytrain station, shopping at Brentwood mall, as well as various schools, restaurants and parks. Ideal home for families and pet owners! Don't let this incredible opportunity pass you by!

KEY INFORMATION

MLS® R2456103

Residential Attached

Brentwood Park

2 Bedrooms

2 Bathrooms

1,060 SF

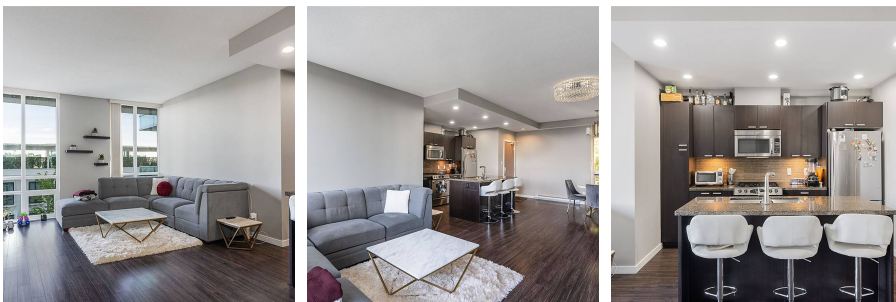
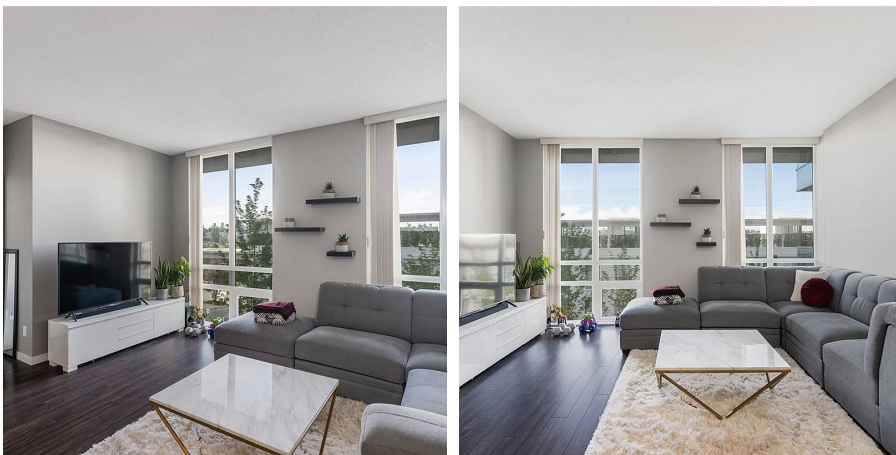
1,060 SF Lot

\$305.00 Maintenance Fees

FEATURES

Year Built: 2012

Listed By: rennie & associates realty ltd.



Brandon Blue PREC*
604.999.7792
bblue@rennie.com
rennie.com/brandonblue

rennie