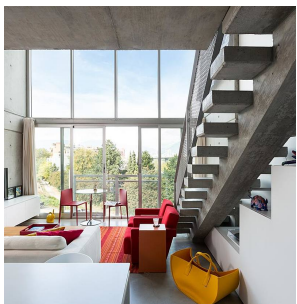
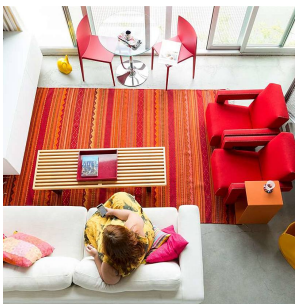
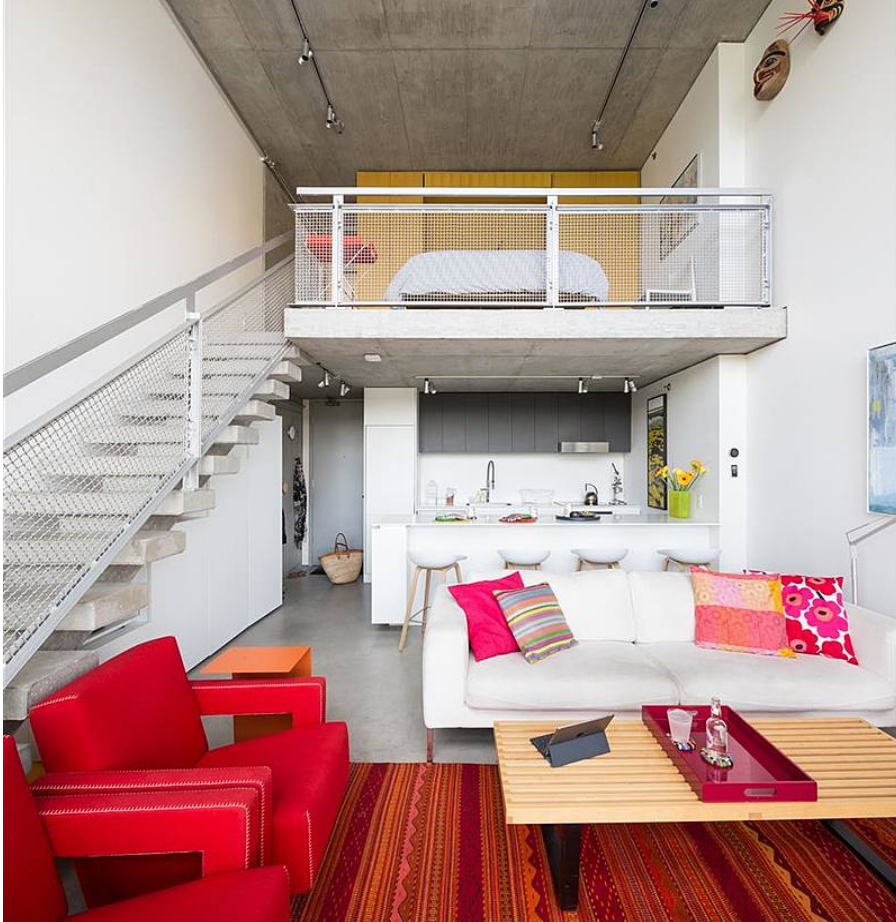


605 1540 W 2nd Avenue, Vancouver

\$1,350,000



ICONIC WATERFALL BUILDING - RENOVATED PENTHOUSE LOFT originally designed by renowned architect ARTHUR ERICKSON, renovated by Sturgess Architecture and featured in WESTERN LIVING - photos by Ema Peter. Features: Geothermal Radiant Floor heating, Millwork by CUBE MILLWORK, Wood lined interiors, Bocci flush electrical outlets. Miele Appliances, Lighting designed by Vektra Lighting, NEST Thermostat, 2 Retractable Murphy Beds and built in for closets. Overheight 16 Ft ceilings, floor to ceiling windows with 360 Degree UNOBSTRUCTED VIEWS from your over 675 SQFT ROOFTOP of Downtown, City, Water and Mountains. Located around the corner from Granville Island, steps to the Sea Wall, shops on 4th Ave and walk distance to KITS and DT. VIRTUAL TOUR: <https://my.matterport.com/show/?m=Ts4wyTqaPyT&brand=0>

KEY INFORMATION

MLS® R2457557

Residential Attached

False Creek

2 Bedrooms

1 Bathroom

974 SF

\$499.63 Maintenance Fees

FEATURES

Year Built: 2001

Views: DT/FALSE CREEK/MOUNTAINS

Listed By: rennie & associates realty ltd.



Calvin Kan PREC*
604.616.8373
ckan@rennie.com
rennie.com/calvinkan



Christopher Boyd PREC*
604.351.0533
cboyd@rennie.com
rennie.com/christopherboyd

rennie