

# 505 298 E 11th Avenue, Vancouver

\$674,900



Stunning downtown and mountain views from this large one bedroom and den home in Mount Pleasant's desirable Sophia development. Features include over-height ceilings, engineered hardwood floors, and gourmet kitchen complete with gas range, stainless appliances, granite counters, parking stall and storage locker. Located just a quick walk to transit and the upcoming Broadway Skytrain extension and pet /rental friendly, this home has all the best amenities of Main Street just outside your door; restaurants, groceries (Nesters, Save-On Foods), coffee shops and the popular Guelph Park (aka Dude Chilling Park).

## KEY INFORMATION

MLS® R2459794

Residential Attached

Mount Pleasant

1 Bedroom

1 Bathroom

730 SF

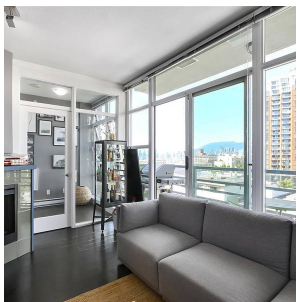
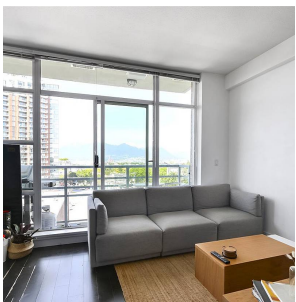
\$381.51 Maintenance Fees

## FEATURES

Year Built: 2008

Views: Stunning city & mountain views

Listed By: rennie & associates realty ltd.



**Salina Kai** PREC\*  
604.773.7013  
skai@rennie.com  
rennie.com/salinakai

**rennie**