

1919 Arborlynn Drive, North Vancouver

\$1,598,000



Westlynn Gem! Large, sun-filled West Lynn prprty w/ private reno'd family home. Approx. 2,800 sq. ft., 2 lvls, open plan. Bright lvng area w/ fp & media cntr, spacious dng area w/ sliding drs, custm chef's ktchn, Caesarstone counters, top applncs, miles of cabinets, all new windows, & 5 lrg bdrms. Master suite w/ lrg walk-thru closet & spa-like ensuite. Wide plank white oak h/w flrs thruout. All open to lush private yard w/ dng area, hot tub, fire pit & BBQ cntr, child-friendly areas, lush gardens and a 2 car garage. New lighting, new roof, in-law suite w/ sep. access & ample strge. Near Appin & Keith Lynn Parks, Lynn Creek, Park & Tilford Mall, & new Highway #1 w/ easy access to d/t Vancouver & North Shore amenities. Wonderful opportunity for any growing family to move right in!

KEY INFORMATION

MLS® R2463688

Residential Detached

Westlynn

5 Bedrooms

3 Bathrooms

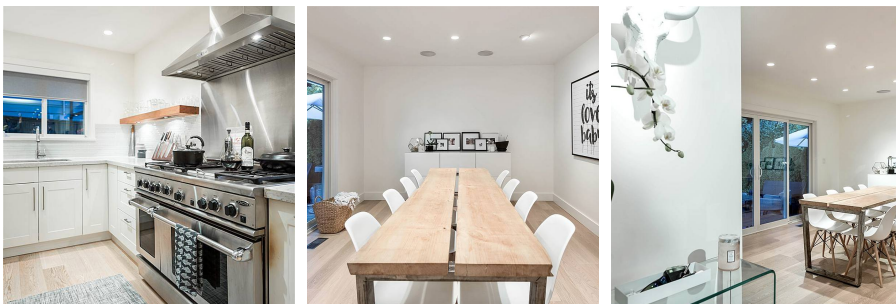
2,620 SF

9,800 SF Lot

FEATURES

Year Built: 1959

Listed By: rennie & associates realty ltd.



Jason Soprovich

604.817.8812

jsoprovich@rennie.com

rennie.com/jasonsoprovich

rennie