

# 509 516 Foster Avenue, Coquitlam

\$699,900



NELSON ON FOSTER BY INTRACORP - PENTHOUSE 2 BEDROOM + DEN - Features include: EXTRA LARGE BALCONY, Over height 9' Ceilings, laminate flooring, granite countertops and stainless steel appliances. Drawing inspiration from famed Mid-Century designer George Nelson, Nelson on Foster is Style + Value. located on a quiet residential street near several walkable parks and schools. Located minutes from the new Evergreen Skytrain line, Hwy 1 & Lougheed Town Centre. 1 Parking and 1 Storage Locker. VIRTUAL TOUR: <https://my.matterport.com/show/?m=XaLe1EGuhYV&brand=0>

## KEY INFORMATION

MLS® R2464524

Residential Attached

Coquitlam West

2 Bedrooms

2 Bathrooms

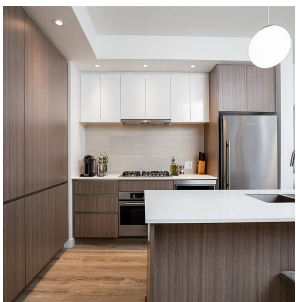
935 SF

\$311.52 Maintenance Fees

## FEATURES

Year Built: 2019

Listed By: rennie & associates realty ltd.



**Calvin Kan** PREC\*  
604.616.8373  
ckan@rennie.com  
[rennie.com/calvinkan](http://rennie.com/calvinkan)

**rennie**