

102 3500 Burke Village Promenade, Coquitlam

\$1,148,900



SOUGHT-AFTER CORNER HOME. This bright 2,239 sq. ft. 4 bed 3.5 bath corner townhome is located at Polygon's Kentwell in Coquitlam's Burke Mountain neighbourhood. This home boasts an overheight ceiling in the entryway, a bright open layout, expansive windows for added natural light and generous kitchen - perfect for playing host! Enjoy the spacious deck off the kitchen and take in the views of the greenspace designated for the Kentwell community. Plus, enjoy the luxury of a private back yard! Move in December 2020. We are currently available for sales by appointment. Please e-mail or call for more information.

KEY INFORMATION

MLS® R2465947

Residential Attached

Burke Mountain

4 Bedrooms

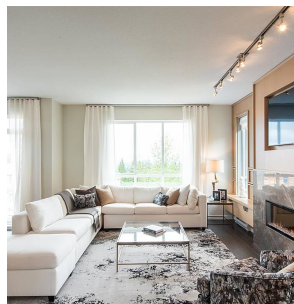
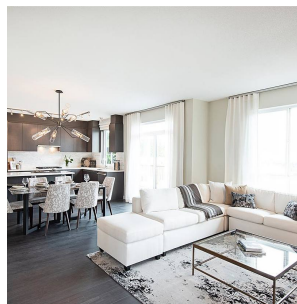
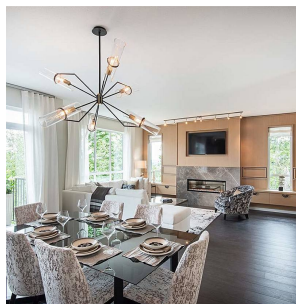
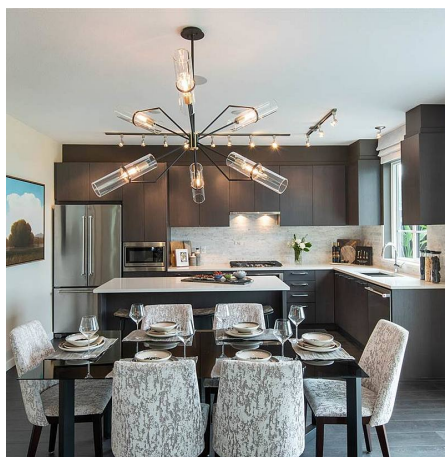
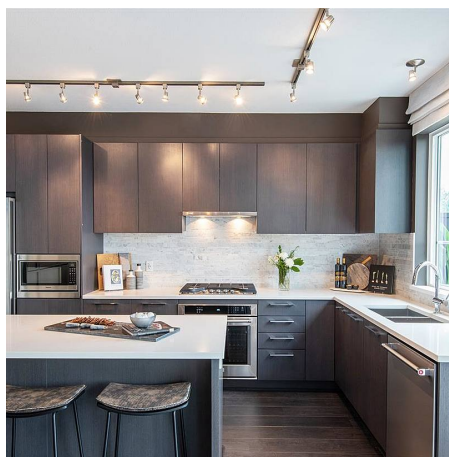
4 Bathrooms

2,236 SF

FEATURES

Year Built: 2020

Listed By: rennie & associates realty ltd.



Danny Chow PREC*
604.765.2469
dchow@rennie.com
rennie.com/dannychow

rennie