

114 250 Francis Way, New Westminster

\$459,000



Stunning 1 bed/1bath townhouse-style home with private entrance at The Grove at Victoria Hill. Bright and airy this 650sqft home presents overheight ceilings, warm flooring and a gourmet kitchen with an abundance of cabinetry, quartz counters and SS appliances. The living area flows into your spacious garden patio, perfect to relax or entertain in style. Spacious master bedroom with large walk-in-closet plus spa-like bathroom with deep soaker tub. Secure parking and storage round out this fantastic offering in a well maintained building with pets and rentals allowed. Residents enjoy access to party room, gym and theatre room. Located only a short stroll from restaurants, shopping, green spaces and transit.

KEY INFORMATION

MLS® R2467253

Residential Attached

Fraserview

1 Bedroom

1 Bathroom

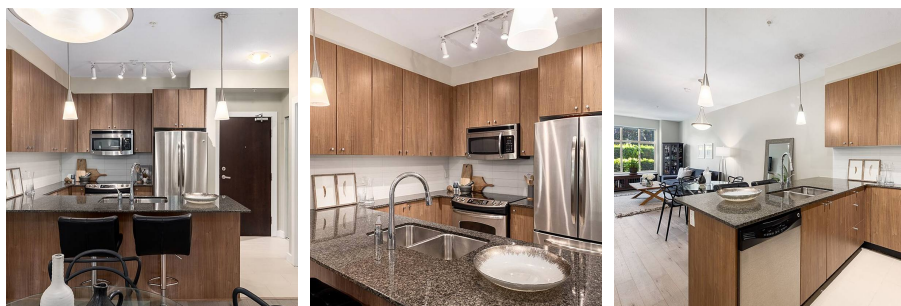
650 SF

\$376.47 Maintenance Fees

FEATURES

Year Built: 2012

Listed By: rennie & associates realty ltd.



Natasha Ramos

604.767.2398

nramos@rennie.com

rennie.com/natashamos

rennie