

35 3960 Canada Way, Burnaby

\$795,000



Cascade Village in desired Burnaby Hospital subarea. Central location close to BCIT, Gilmore Skytrain Station, East Vancouver and easy access to highway. Also, less than 5 min walk to shops, restaurants and services nearby. The amazing open concept layout with spacious dimensions, vaulted ceilings and skylights is truly an entertainer's dream. Enjoy the weather on your private rooftop patio with 700 sq ft of outdoor space. Generous size bedrooms with large closets and a south facing joining balcony. Over \$40K renovations in 2015: new flooring throughout, kitchen cabinets/ counter/back splash/sink, stove, hood fan, fridge, D/W, W/D and hot water tank. Very well run strata recent upgrades to lobby and hallways. By appointment only, call today for private showing.

KEY INFORMATION

MLS® R2467807

Residential Attached

Burnaby Hospital

2 Bedrooms

2 Bathrooms

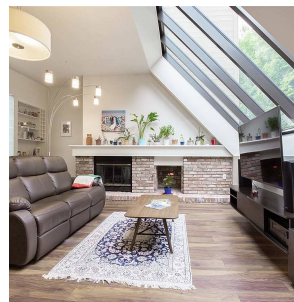
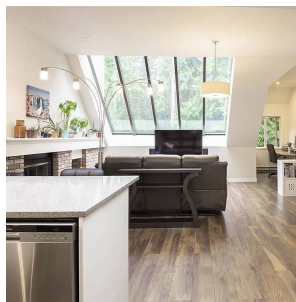
1,503 SF

\$499.71 Maintenance Fees

FEATURES

Year Built: 1986

Listed By: rennie & associates realty ltd.



Shelly Vellani PREC*

604.710.3681

svellani@rennie.com

rennie.com/shellyvellani

rennie