

402 202 Lebleu Street, Coquitlam

\$448,000



LOW Strata Fees & RENTALS ALLOWED!
Welcome to Mackin Park by Bluetree Homes. Welcome home to this beautiful 682 sq ft 1BED/1BATH EAST facing unit in the centre of it all! Built in 2014, this gorgeous unit features luxury soft close cabinetry & an abundance of in-suite storage! Enjoy the high-end finishings of this top floor unit with over sized ceilings! Quartz countertops, breakfast bar & full sized S/S appliances! The spacious living area offers a balcony and nook great for storage and/or office space! 1 PARKING/1 STORAGE LOCKER! Building amenities include a lounge w/ kitchen & a bike room!

KEY INFORMATION

MLS® R2468341

Residential Attached

Maillardville

1 Bedroom

1 Bathroom

682 SF

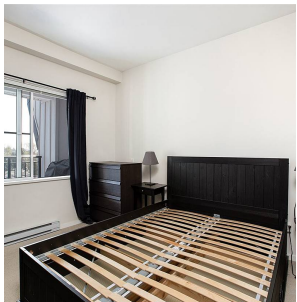
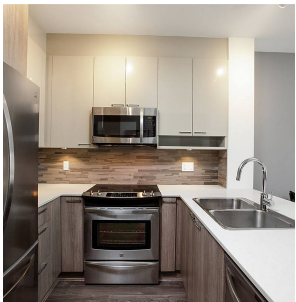
\$252.42 Maintenance Fees

FEATURES

Year Built: 2014

Views: MOUNT BAKER

Listed By: rennie & associates realty ltd.



Harjas Panesar

778.968.8262

hpanesar@rennie.com

rennie.com/harjaspanesar

rennie