

# 116 17769 57 Avenue, Surrey

\$449,000



Ready to move in? This former corner show suite, in popular Clover Downs Estates, has been freshly painted and updated with new carpets. One of the best plans in the building, this unit offers a spacious layout and a huge, sunny, wrap around patio with landscaped greenery for privacy. This centrally located, well maintained building, is a short walk to downtown Cloverdale and nearby shopping, and transit is accessible just outside the front door. Clover Downs amenities include a well equipped gym space, an amenity room, games room, large outdoor courtyard AND a guest suite. Two side by side underground parking spots, visitor parking, a bike room and a private storage locker. Nothing has been missed! Call today to book your private viewing appointment.

## KEY INFORMATION

MLS® R2468853

Residential Attached

Cloverdale

2 Bedrooms

2 Bathrooms

987 SF

\$311.45 Maintenance Fees

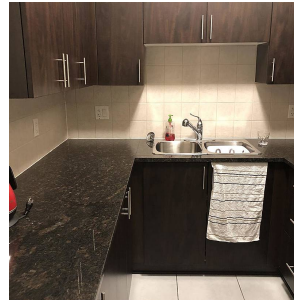
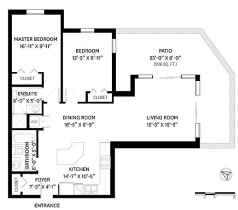
## FEATURES

Year Built: 2009

Listed By: rennie & associates realty ltd.



MAIN FLOOR TOTAL: 987 SQ. FT.  
PATIO: 296 SQ. FT.



**Joanne Hoekstra**

604.722.6645

[jhoekstra@rennie.com](mailto:jhoekstra@rennie.com)

[rennie.com/joannehoekstra](http://rennie.com/joannehoekstra)

**rennie**