

10404 Parkwood Drive, Rosedale

\$799,999



STUNNING Family home, located at the end of a quiet cul de sac. This property offers 2706 sqft of living space, on over a BEAUTIFUL 1/4 acre lot. This 5 bed, 4 bath home boasts 3 levels of living space, basement is plumbed and wired and would be easily converted to an in-law suite. Your Family and loved ones will enjoy this spacious fully fenced backyard. Features include Central A/C, S/S appliances, Vaulted Ceilings in the Great room, ADT security system, central vac, a humidifier built into the furnace and much more! Come and take a look at this beauty.....Don't miss out!

KEY INFORMATION

MLS® R2469184

Residential Detached

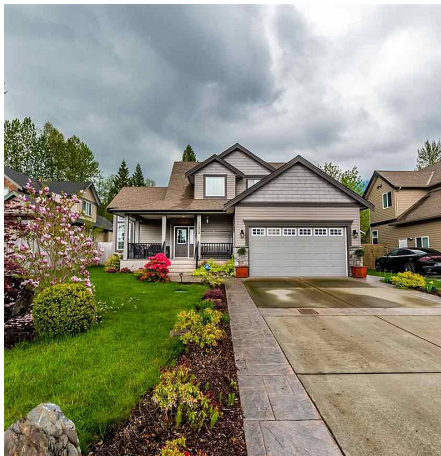
BC

5 Bedrooms

4 Bathrooms

2,706 SF

11,761 SF Lot



FEATURES

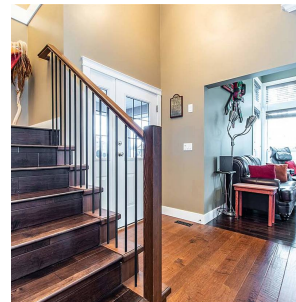
Year Built: 2010

Views: MOUNTAINS

Listed By: rennie & associates realty ltd.

wood Dr.
FLOOR 1: 972 SQFT - FLOOR 2: 1,048 SQFT
FLOOR 3: 688 SQFT
TOTAL: 2,706 SQFT
GARAGE: 396 SQFT

© Realty Limited



Clarke Mallory PREC*
604.316.9917
cmallory@rennie.com
rennie.com/clarkemallory

rennie