

5240 Chamberlayne Avenue, Delta

\$918,000



Quintessential character home on a quiet street in Ladner's popular Neilson Grove neighbourhood. A gardener's delight, this property offers plenty of outside storage space for all of your tools, pots and planting gear. With both family and living rooms and four bedrooms, there are plenty of nooks to satisfy a family and spread out in this 1814SF rancher. Settle in while you plan for your dream home on this rectangular lot, or add your finishing touches to make this home. Close to local parks, golf, the marina and a short walk to the heart of Ladner Village. Book your private appointment to view.

KEY INFORMATION

MLS® R2469727

Residential Detached

Neilson Grove

4 Bedrooms

2 Bathrooms

1,814 SF

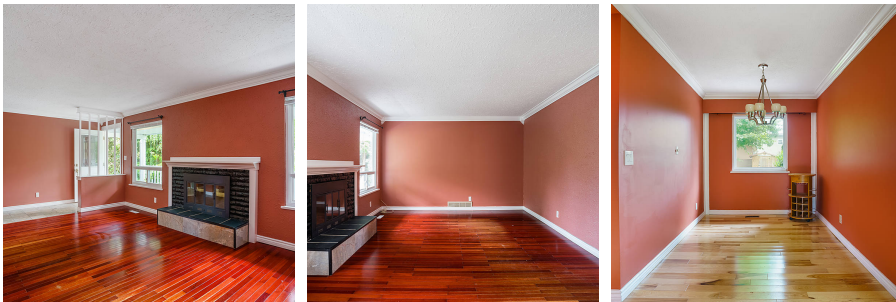
6,666 SF Lot



FEATURES

Year Built: 1973

Listed By: rennie & associates realty ltd.



Joanne Hoekstra

604.722.6645

jhoekstra@rennie.com

rennie.com/joannehoekstra

rennie