

# 11200 Railway Avenue, Richmond

\$1,698,900



Westwind – incredible custom-built home that measures nearly 2,800 SqFt on two levels. This open concept floor plan designed home has 4 bedrooms and 3 bathrooms in the main home and offers a self-contained, private 1 bedroom nanny-quarters with kitchen, living, and bathroom. Tasteful touches in the home include polished concrete floors on the main level, vertical grain solid fir doors throughout, Euroline Tilt and Turn windows and in-floor hydronic heating over both floors. The kitchen is finished with ethically sourced cherry wood cabinets and granite counters. The eastern exposed back yard is perfect for entertaining and is accessed off the kitchen via large over height French doors, it offers terrific privacy and dual natural gas outlets.

## KEY INFORMATION

MLS® R2471293

Residential Detached

Westwind

5 Bedrooms

4 Bathrooms

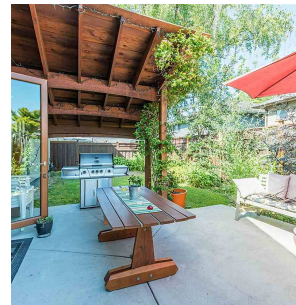
2,720 SF

4,542 SF Lot

## FEATURES

Year Built: 2008

Listed By: rennie & associates realty ltd.



**Calvin Kan** PREC\*  
604.616.8373  
ckan@rennie.com  
rennie.com/calvinkan

**rennie**