

# 127 1894 Osprey Drive, Tsawwassen

\$765,000



This popular Duplex plan in Tsawwassen Shores' Pelican Cove Two is a short walk to the neighbourhood parks, Tsawwassen Mills, transit and ocean-side trails, perfectly situated in the community for easy access to the area amenities. This home offers open, great room living on the main, with vaulted ceilings and a cozy gas fireplace. Upstairs, three bedrooms, a convenient laundry room and an upgraded Master Bathroom with a frameless glass walk-in shower. Storage is a breeze with the two car, side-by-side garage and custom organizers in closets and cupboards throughout the home. Walk out to enjoy your ground floor patio, with gas BBQ hook up and fully fenced WEST facing backyard. Book your private appointment to view!

## KEY INFORMATION

MLS® R2472579

Residential Attached

Ladner Rural

3 Bedrooms

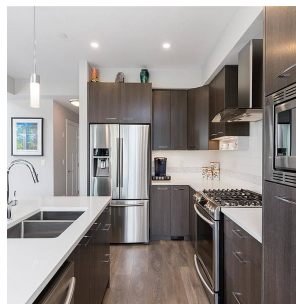
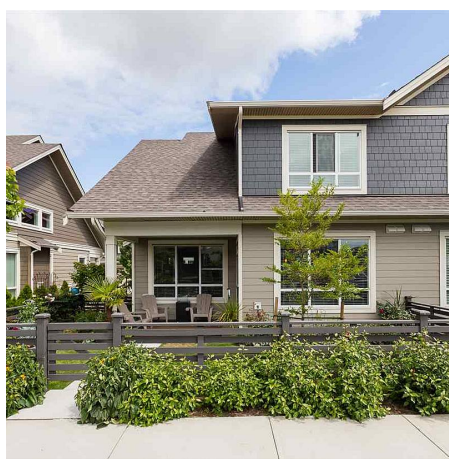
3 Bathrooms

1,529 SF

## FEATURES

Year Built: 2018

Listed By: rennie & associates realty ltd.



**Joanne Hoekstra**

604.722.6645

[jhoekstra@rennie.com](mailto:jhoekstra@rennie.com)

[rennie.com/joannehoekstra](http://rennie.com/joannehoekstra)

**rennie**