

516 9171 Ferndale Road, Richmond

\$550,000



BEST DEAL IN RICHMOND CONCRETE BUILDING. Built by CONCORD PACIFIC. Under \$550k Own the property with good long term tenants or move in for up-sizing! Award-Winning high-rise built by Concord Pacific, 776 SQFT bright & spacious 2 bedroom 2 bathroom with 1 parking stall; Looking over the garden court-yard views, Gourmet kitchen with granite counter top, stainless steel appliances, laminate flooring throughout the unit. The building has a fully equipped gym & clubhouse, convenient location near Lansdowne Mall, bus, shops, Kwantlen College & Walmart, 1 min. drive to Richmond Centre, Canada Line. 4 mins walk to Henry Anderson elementary & MacNeill Secondary school. OPEN HOUSE SAT JULY 11 2:00-4:00PM, MASK REQUIRED FOR ENTRY

KEY INFORMATION

MLS® R2472728

Residential Attached

Mc Lennan North

2 Bedrooms

2 Bathrooms

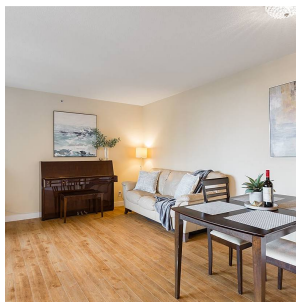
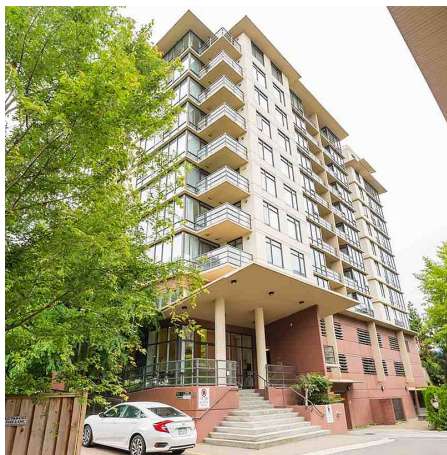
776 SF

\$270.00 Maintenance Fees

FEATURES

Year Built: 2008

Listed By: rennie & associates realty ltd.



Simon Lai PREC*
778.881.3603
slai@rennie.com
rennie.com/simonlai

rennie