

12971 88 Avenue, Surrey

\$998,000



Custom build your DREAM HOMES on this progressing subdivided lot. Situated on almost 10,000 sq/ft of land, each lot will amount to over 4500 sq ft. & will accommodate you building 2 homes. Build your residences with legal mortgage helper suite. Back Laneway access provides ease of passage with room to park 4 cars on each lot. Neighbouring Trees in and around lot have city and neighbour approval for removal. The pending sub-division awaits PLA from the city this summer and has been paid for. Possibilities are endless! Located in the highly desirable neighbourhood of Queen Mary Park, with proximity to reputable elementary schools, shopping, outdoor amenities, & recreational activities, your picturesque lifestyle will easily become a reality. MUST SEE VIRTUAL TOUR!

KEY INFORMATION

MLS® R2472938

Residential Detached

Queen Mary Park

3 Bedrooms

1 Bathroom

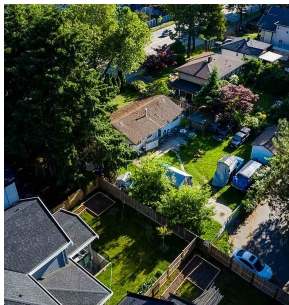
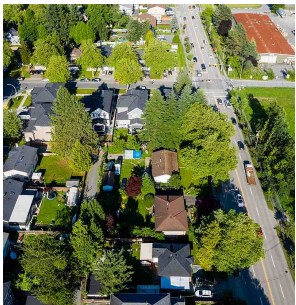
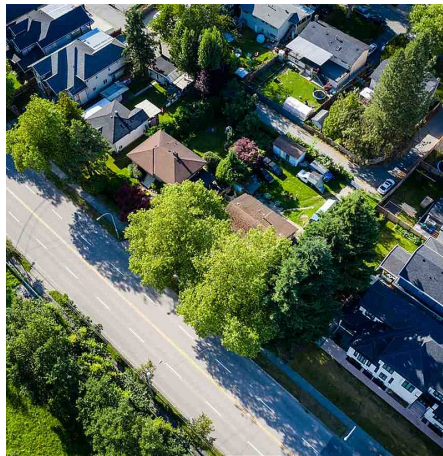
1,050 SF

9,829 SF Lot

FEATURES

Year Built: 9999

Listed By: rennie & associates realty ltd.



Nagib Karim PREC*
604.999.5887
nkarim@rennie.com
rennie.com/nagibkarim



Shelly Vellani PREC*
604.710.3681
svellani@rennie.com
rennie.com/shellyvellani

rennie