

# 1206 980 Cooperage Way, Vancouver

\$1,560,000



Welcome to WATERFRONT LIVING at prestigious COOPER'S POINTE by Concord Pacific. Savor the TRANQUILITY - in this STUNNING and DIRECT WATER and Beautiful FALSE CREEK VIEW from every room. LIVE an ACTIVE LIFESTYLE - walk to seawall, park, marina, shopping and dining. Enjoy FUNCTIONALITY with 2BED + 2BATH + DEN (can be a bedroom) + FLEX plan in this prime location of DT Vancouver. A truly exceptional home to LIVE IN or to INVEST. The building offers full time CONCIERGE and exclusive ACCESS to "CLUB ESPRIT" offering indoor lap pool, sauna/steam room, bowling alley, theatre, gym, party room and kayaks. Covid protocol in effect (Covid waiver, mask and gloves provided).

## KEY INFORMATION

MLS® R2475187

Residential Attached

Yaletown

2 Bedrooms

2 Bathrooms

1,211 SF

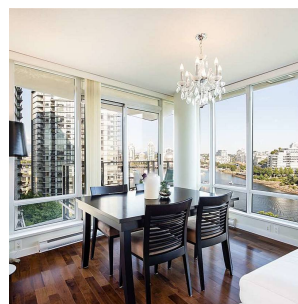
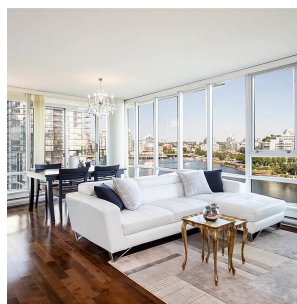
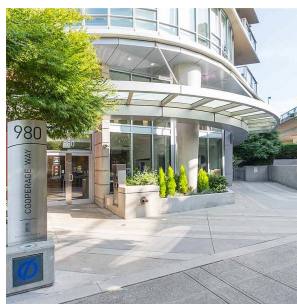
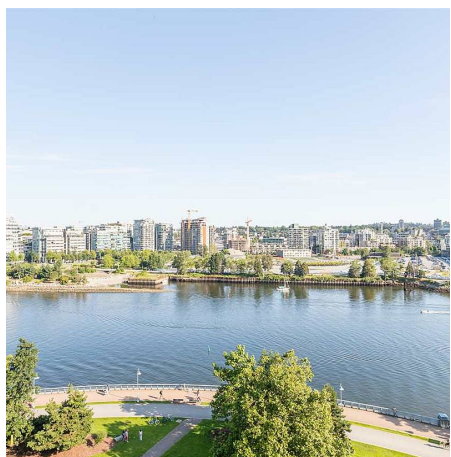
\$707.94 Maintenance Fees

## FEATURES

Year Built: 2008

Views: WATER AND PARK

Listed By: rennie & associates realty ltd.



**Linda Kang**  
604.787.5923  
lkang@rennie.com  
rennie.com/lindakang

**rennie**